

# METER CHURN PROCEDURE FOR FINANCIALLY RESPONSIBLE MARKET PARTICIPANTS

PREPARED BY: Retail Markets and Metering

DOCUMENT NO: MT\_MI2054

VERSION NO: V1.0

PREPARED FOR: National Electricity Market

EFFECTIVE DATE: 1 September 2015

FINAL

## Important Disclaimer

- (a) **Purpose** – This document has been prepared by the Australian Energy Market Operator Limited (**AEMO**) for the purpose of complying with clause 7.3.4(j) of the National Electricity Rules (**Rules**).
- (b) **Supplementary Information** – This document might also contain information the publication of which is not required by the Rules. Such information is included for information purposes only, does not constitute legal or business advice, and should not be relied on as a substitute for obtaining detailed advice about the National Electricity Law, the Rules, or any other relevant laws, codes, rules, procedures or policies or any aspect of the national electricity market, or the electricity industry. While AEMO has used due care and skill in the production of this document, neither AEMO, nor any of its employees, agents and consultants make any representation or warranty as to the accuracy, reliability, completeness, currency or suitability for particular purposes of the information in this document.
- (c) **Limitation of Liability** – To the extent permitted by law, AEMO and its advisers, consultants and other contributors to this document (or their respective associated companies, businesses, partners, directors, officers or employees) shall not be liable for any errors, omissions, defects or misrepresentations in the information contained in this document or for any loss or damage suffered by persons who use or rely on this information (including by reason of negligence, negligent misstatement or otherwise). If any law prohibits the exclusion of such liability, AEMO's liability is limited, at AEMO's option, to the re-supply of the information, provided that this limitation is permitted by law and is fair and reasonable.

© 2014 - All rights reserved.

## Version Release History

VERSION	DATE	AUTHOR	PEER REVIEW	APPROVED	COMMENTS
1	November 2007	AEMO			Initial draft
2	April 2008	AEMO			Draft after first round of Consultation.
3	June 2008	AEMO			Draft after second round of Consultation.
4	February 2010	AEMO			Updated to AEMO format
5	February 2011	AEMO	MSWG	AEMO	Document updated / rewritten to become a procedure to comply with Version 41 of the <i>Rules</i> .
6	March 2014	Lee Brown	MSWG	AEMO	Redrafted to ensure Procedure is consistent with the <i>Rules</i>
7	Nov 2014	Lee Brown	MSWG	AEMO	Updated with feedback from participants and MSWG after first stage consultation.
1.0	Dec 2014	Lee Brown	MSWG	AEMO	Updated with feedback from participants and MSWG after second stage consultation.

## Table of Contents

<b>1.</b>	<b>GENERAL</b>	<b>3</b>
1.1	Interpretation	3
1.2	Regulatory framework	3
1.3	References	3
1.4	Definitions	4
<b>2.</b>	<b>PURPOSE</b>	<b>4</b>
2.1	Background	4
<b>3.</b>	<b>OBLIGATIONS</b>	<b>5</b>
3.1	Initiating Meter Churn	5
3.2	Managing Meter Churn	6

## 1. GENERAL

### 1.1 Interpretation

- 1.1.1 In this procedure words that are shown in italics have the meaning specified in the *Rules*, or if they are not specified in the *Rules*, they have the meaning specified in section 1.4 of this procedure.
- 1.1.2 A reference in this procedure to a provision in the *Rules* is taken to be a reference to that provision as renumbered from time to time.
- 1.1.3 In this procedure words in the singular include the plural and words in the plural include the singular.
- 1.1.4 A reference within this document to 'Metering Service Provider' is a reference to either a *Metering Provider* or a *Metering Data Provider* unless otherwise specified.
- 1.1.5 In this procedure, diagrams are provided as an overview. If there are ambiguities between a diagram and the text, the text shall take precedence.

### 1.2 Regulatory framework

- 1.2.1 This Meter Churn Procedure details the requirements that the *financially responsible Market Participant* must consider in the management of *Meter Churn* resulting from an alteration to a *metering installation*.
- 1.2.2 In accordance with clause 7.3.4 (m) of the *Rules*, this Meter Churn Procedure applies to *financially responsible Market Participants* who are not the *responsible person* for a type 5 or type 6 *metering installation* that is being altered.
- 1.2.3 This procedure is established by *AEMO* under clause 7.3.4 (j) of the *Rules*. The requirement to establish this procedure was inserted into the *Rules* to ensure that a set of protocols and rules existed that govern *Meter Churn* behaviour of *financially responsible Market Participants*.

### 1.3 References

- 1.3.1 In this Meter Churn Procedure, a reference to:
- a) 'MSATS' or 'MSATS Procedures' is a reference to any one or all of the following documents in accordance with the context of the provision.
    - i. 'CATS Procedure' is a reference to the CATS Procedures Principles and Obligations; and
    - i. 'WIGS Procedure' is a reference to the Procedures for the Management of Wholesale, Interconnector, Generator and Sample (WIGS) NMI's.
  - b) 'B2B Procedures' is a reference to any one or all of the following documents in accordance with the context of the provision:
    - i. 'Customer and Site Details Notification Process';
    - ii. 'Service Order Process';
    - iii. 'Meter Data Process'; and
    - iv. 'One Way Notification'.
  - c) '*metrology procedure: Part A*' is a reference to the 'Metrology Procedure: Part A' National Electricity Market.

## 1.4 Definitions

- 1.4.1 **Meter Churn** - *Meter Churn* occurs where one or more *meters* are changed or altered at a *metering installation*.
- 1.4.2 **new Metering Data Provider, new Metering Provider**, - A Metering Service Provider, that is not, but is proposed to be, the active participant in MSATS for the *connection point*.
- 1.4.3 **current Metering Data Provider, current Metering Provider, current responsible person**. - A Metering Service Provider, *Registered Participant* or *Market Participant* that is the active participant in MSATS for the *connection point*.

## 2. PURPOSE

The purpose of this Meter Churn Procedure is to define obligations that the *financially responsible Market Participant* is to follow in the management of *Meter Churn*.

### 2.1 Background

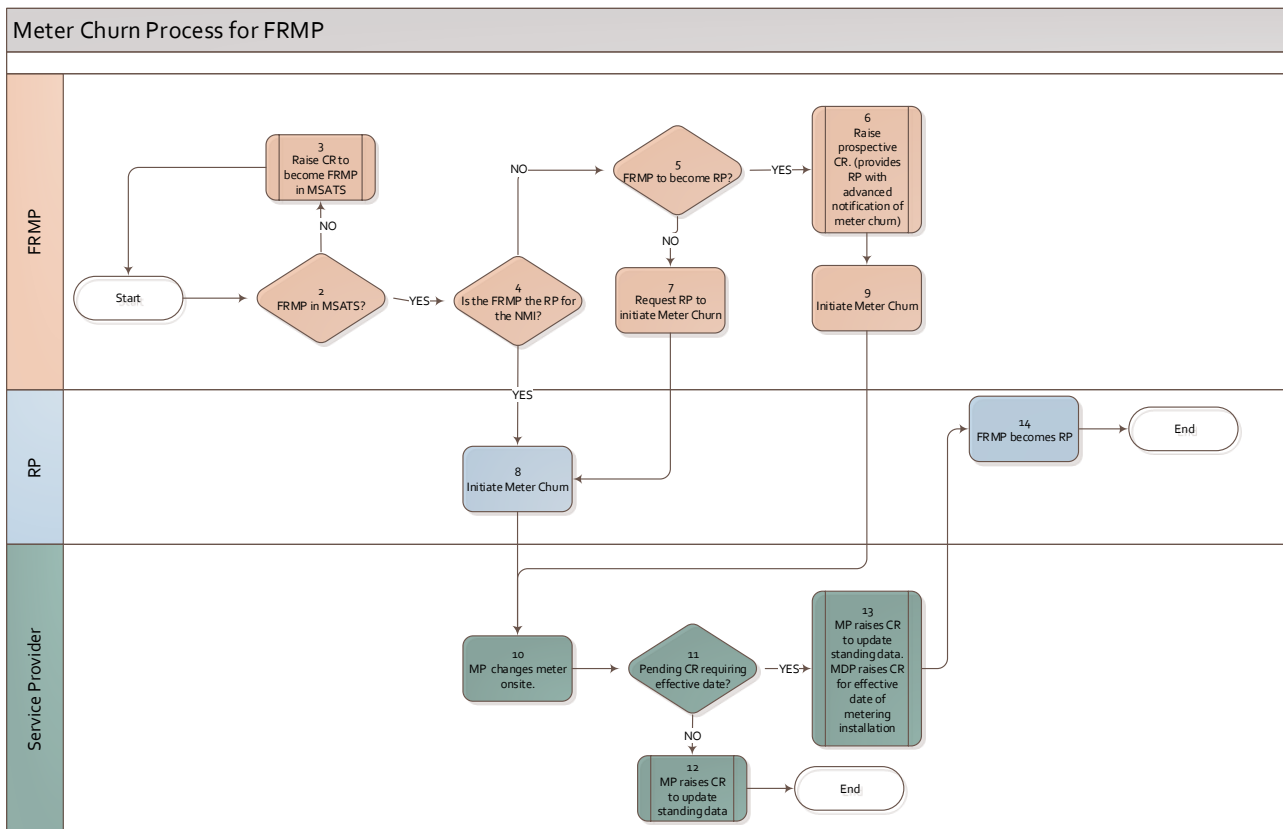
- 2.1.1 *Meter Churn* can result in a change to the configuration of the *metering data* recorded by a *metering installation*. This change in *metering data* may result in an alteration to the MDFF or MDM *metering data* file. A change of Metering Service Provider(s) may instigate *Meter Churn*.
- 2.1.2 The *responsible person* can initiate *Meter Churn* at any time. Where the *financially responsible Market Participant* is not the *responsible person*, the *financially responsible Market Participant* for the *market load* may request the *responsible person* perform *Meter Churn*.
- 2.1.3 Where the *financially responsible Market Participant* is the *responsible person* for a type 1-4 *metering installation* that is changing to a type 5-6 *metering installation* and the *Local Network Service Provider* will become the *responsible person* as a result of the change, the *financially responsible Market Participant* must request the *Local Network Service Provider* to perform *Meter Churn* in accordance with *B2B Procedures* and jurisdictional requirements.
- 2.1.4 This Procedure details the requirements for two additional scenarios that require the *financially responsible Market Participant* to perform additional actions:
  - a) Type 5 or 6 to a type 1-4 *Meter Churn* - where the *Local Network Service Provider* will remain as the *responsible person*:
    - i. The *financially responsible Market Participant* may request the *responsible person* perform *Meter Churn* in accordance with the *B2B Procedures*, having first requested and accepted the *Local Network Service Provider's* offer to be the *responsible person*.
  - b) Type 5 or 6 to a type 1-4 *Meter Churn* - where the *financially responsible Market Participant* intends on becoming the *responsible person*:
    - i. The *financially responsible Market Participant* for the *market load* in MSATS can engage its selected service providers to perform *Meter Churn*, providing the *responsible person* has been made aware of the *Meter Churn* in advance. Following the *Meter Churn*, the *financially responsible Market Participant* must become the *responsible person* in accordance with the MSATS Procedures.

### 3. OBLIGATIONS

#### 3.1 Initiating Meter Churn

- 3.1.1 *Meter Churn* can be initiated by the *responsible person* at any time.
- 3.1.2 *Meter Churn* can be initiated by the *financially responsible Market Participant* for the relevant *market load*, as recorded in MSATS, in the following circumstances:
- a) Where the *financially responsible Market Participant* does not intend to become the *responsible person* for the *metering installation* as a result of the *Meter Churn*, the *financially responsible Market Participant* may request the *responsible person* to perform *Meter Churn* in accordance with the *B2B Procedures*; or
  - b) Where the *financially responsible Market Participant* intends to become the *responsible person* for the *metering installation* as a result of the *Meter Churn*, the *financially responsible Market Participant* must notify the current *responsible person* in advance of any alterations to the *metering installation* or change of service provision being undertaken, including:
    - i. The proposed date of the change or alteration; and
    - ii. In accordance with the requirements of the MSATS Procedures.
  - c) Where the *Local Network Service Provider* will become the *responsible person* for the *metering installation* as a result of the *Meter Churn*, the *financially responsible Market Participant* must request the *Local Network Service Provider* to perform *Meter Churn* in accordance with the *B2B Procedures* and jurisdictional requirements.
- 3.1.3 If *Meter Churn* will result in a type 5 or 6 *metering installation* becoming a type 1, 2, 3 or 4 *metering installation*, the *financially responsible Market Participant* must become the *responsible person* as a result of the *Meter Churn*, unless the *financially responsible Market Participant* has requested the *Local Network Service Provider* to provide an offer to act as the *responsible person* and has accepted that offer in accordance with section 7.2.2 of the *Rules*.
- 3.1.4 Where there will be a change in Metering Service Provider or *responsible person* as a result of *Meter Churn* then the *financially responsible Market Participant* must raise a prospective change request in MSATS nominating the role changes prior to initiating the *Meter Churn*.
- 3.1.5 Figure 1 below outlines the high level process flow for the *financially responsible Market Participant* regarding *Meter Churn*.

Figure 1.



### 3.2 Managing Meter Churn

3.2.1 Where a financially responsible Market Participant initiates Meter Churn, the financially responsible Market Participant must:

- a) Ensure the *metering installation* is at all times, compliant with the *Rules*;
- b) Ensure that information is made available to any new *Metering Provider* to facilitate the *Meter Churn*, which must include, but is not limited to:
  - i. The *NMI*;
  - ii. The *connection point* site address;
  - iii. The meter serial number(s) of the meter(s) to be removed;
  - iv. The name of the current *Metering Provider* and their MSATS participant identifier;
  - v. The name of the current *Metering Data Provider* and their MSATS participant identifier;
  - vi. The current *metering installation* type; and
  - vii. Instructions on the required changes.
- c) Ensure that anew *Metering Provider* operates in accordance with the requirements of the *Service Level Procedure: Metering Provider Services Category B for Metering Installation Types 1, 2, 3, 4, 5 and 6*, and *metrology procedure: Part A* including:
  - i. The return of all removed metering equipment to the owner of that equipment;
  - ii. The provision of the relevant official metering change documentation to the *Local Network Service Provider*; and
  - iii. The provision of the *metering installation* details to the *Metering Data Provider*.



- d) Ensure that the start date for a new *Metering Provider*, a new *Metering Data Provider* and where relevant, a new *responsible person* is:
  - i. The meter change date for an accumulation to interval meter change;
  - ii. The meter change date for an interval to interval meter change; and
  - iii. For jurisdictions where reversion is permitted, the meter change date + 1 day for an interval to accumulation meter change.
- e) Where there is a change in *Metering Data Provider*, ensure the *metering data* is managed in accordance with the requirements of the Service Level Procedure: Metering Data Provider Services Category D and C for Metering Installation Types 1, 2, 3, 4, 5, 6 and 7;
- f) Ensure all role assignments in MSATS for the *connection point* are correct in accordance with MSATS Procedures within 2 *business days* of the *Meter Churn*; and
- g) Ensure relevant registration information is received after the field works is performed at the *connection point* by the *Local Network Service Provider* and *Metering Provider*.