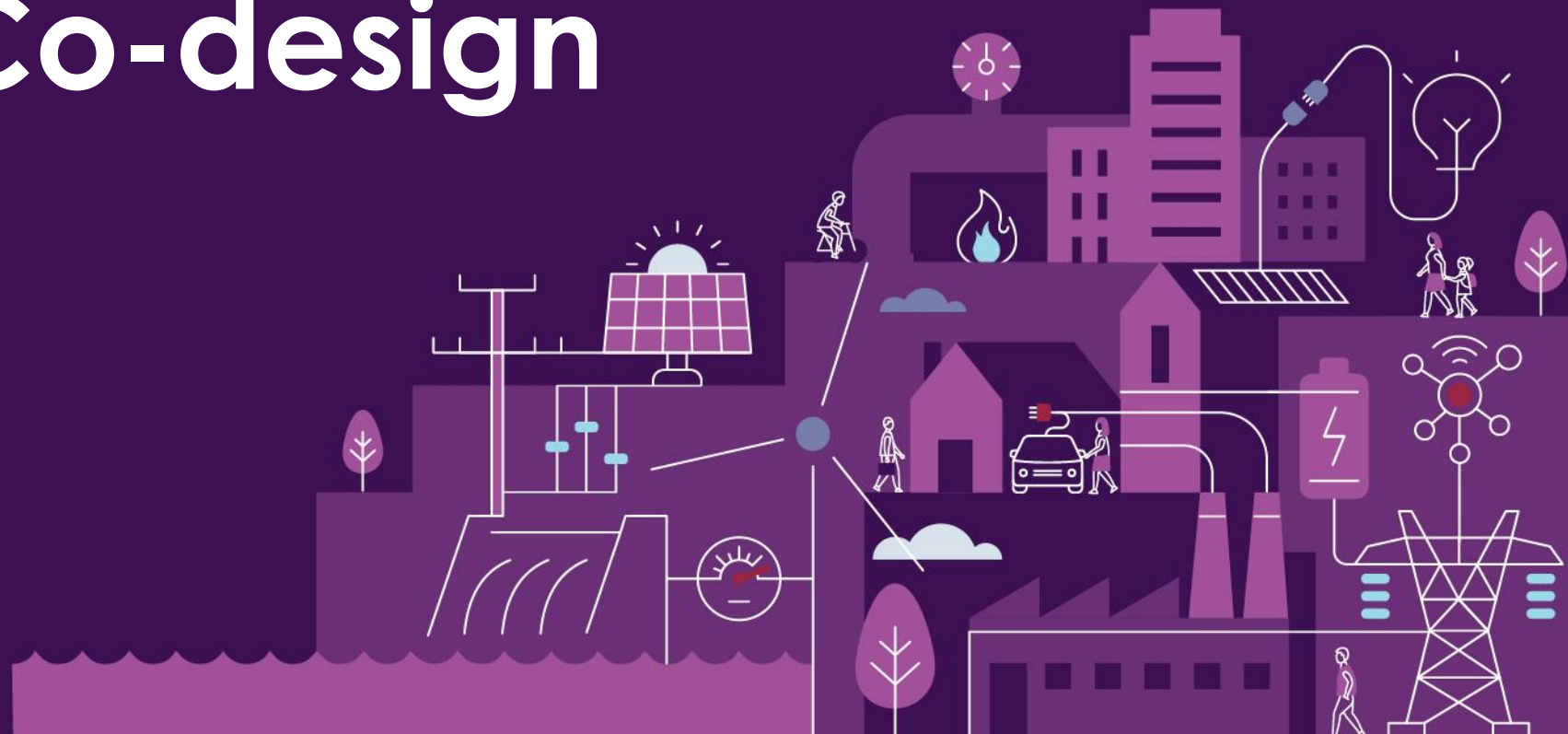


# CER Data Exchange Industry Co-design

**Workshop 2**

19 September 2024



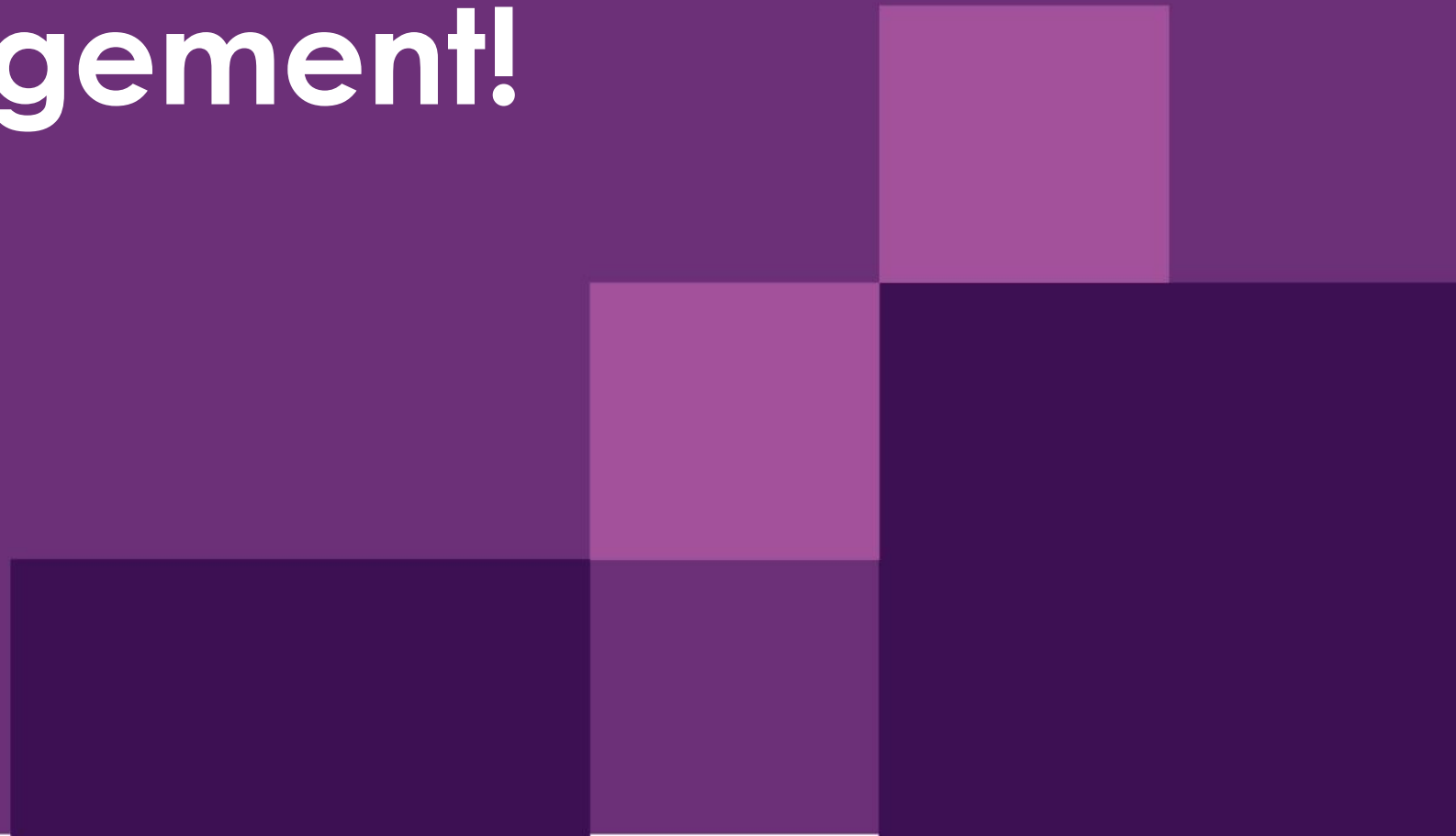
We acknowledge the Traditional Owners of country throughout Australia and recognise their continuing connection to land, waters and culture.

**We pay respect to their Elders past, present and emerging.**



# One more acknowledgement!

A word of thanks



# We had help from a group of experts



22 members  
8 broad stakeholder groups



7 x EWG meetings  
13 hours of collaborative discussion

- ✓ Shaped how we structure our workshop today
- ✓ Very active, robust, and constructive discussions on use cases
- ✓ Tested the concepts we're exploring today

# Housekeeping, venue safety and meeting logistics



# Housekeeping and venue safety



## Emergency Exits



## Photography

Photography inside Meers Hall is allowed but is **prohibited** in the broader gallery.

# A few requests from the project team



Be open to  
different  
perspectives



Outcome focused  
– focus on the  
problem we are  
trying to solve, but  
we can't solve  
everything



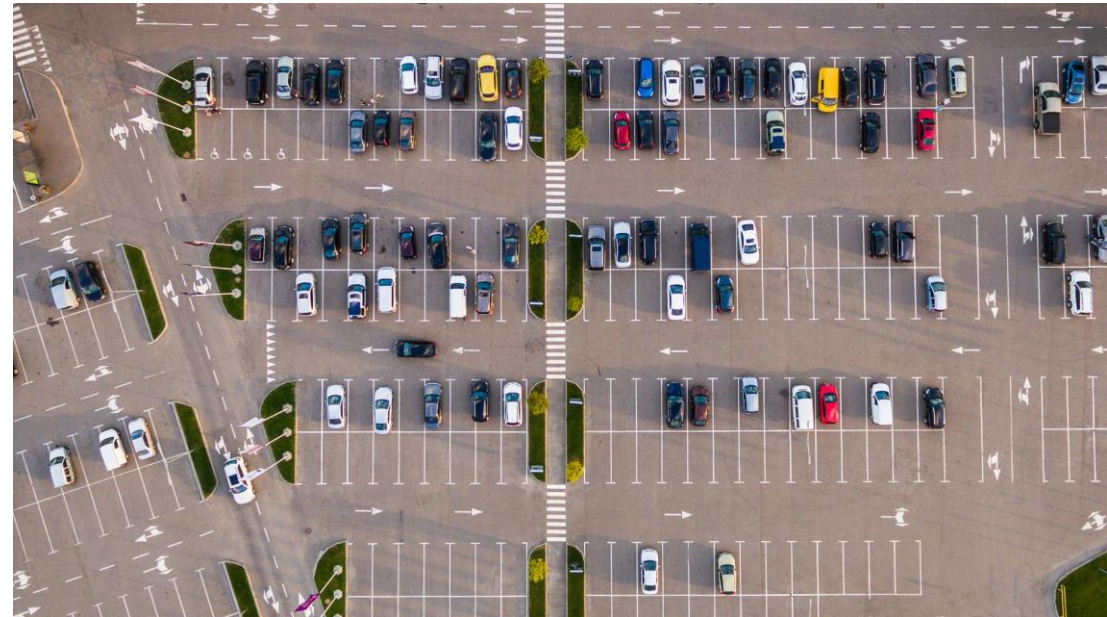
Welcome  
constructive  
questions



Please stay at  
your allocated  
tables.

# Ideas wall and Parking Lot

Capturing all our ideas today





# Today's workshop

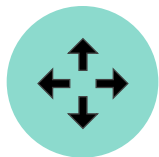
# Today is all about co-design

## Morning session: Co-design Activity 1

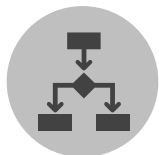
What are the different ways of addressing CER data challenges?



Explore four potential **data exchange challenges** through use cases



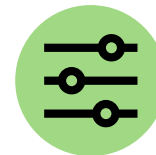
Investigate **three alternative futures** for exchanging CER data in Australia



Focus on the **what, how, when, and why** of using 10 example use cases

## Afternoon session: Co-design Activity 2

If there is a CER Data Exchange, what is your high-level preference for its form?



Identify key trade offs for **functionality, ownership and oversight**



Assess **pros and cons** of representative design options



Evaluate how the representative design options **meet co-defined criteria**

# The CER Data Exchange Co-design project

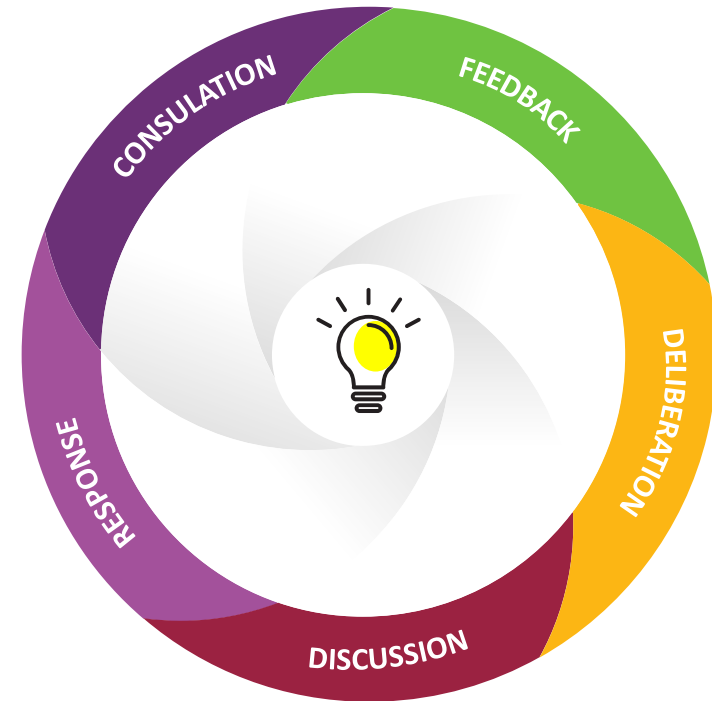


# What is the CER Data Exchange Co-Design project?

Alignment on a high-level design preferences



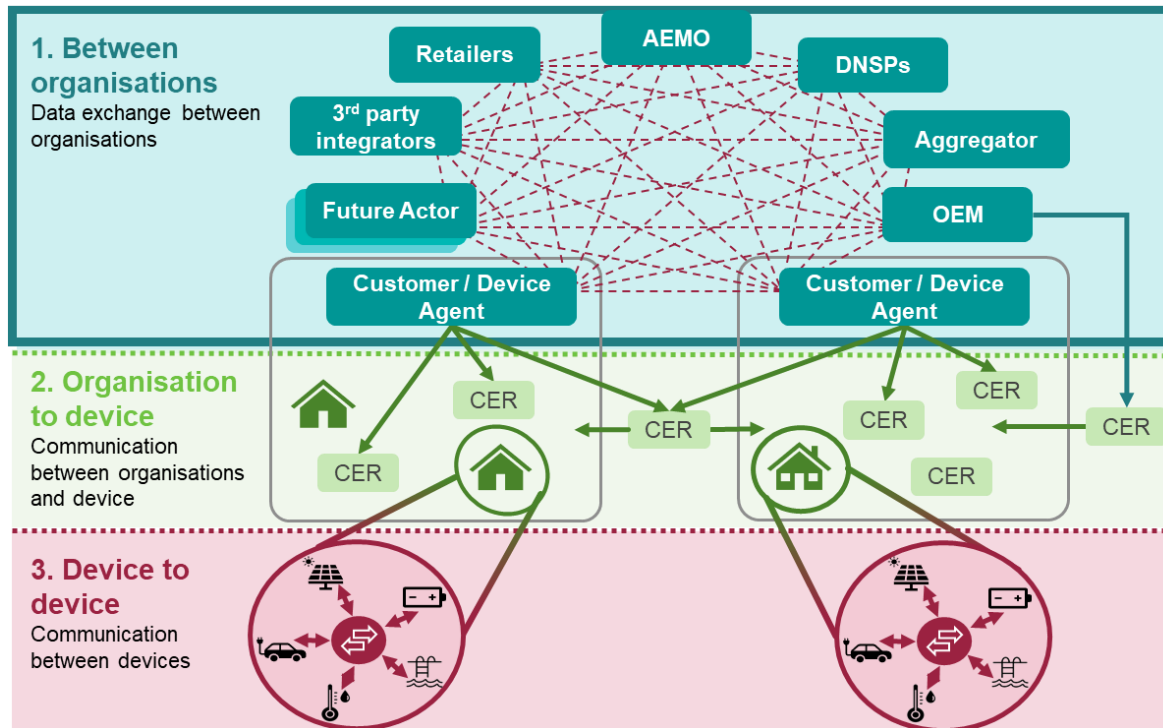
Co-design project with stakeholders



# This initiative is focusing on organisation-organisation data transfers

## An org-to-org CER data exchange

Its form is what we will co-design together



## What the CER data exchange isn't:

- ✘ **Not all data** – only for certain use cases where efficient solutions do not exist
- ✘ **Not for control** – communication only with control systems separate
- ✘ **Not to consumer devices** – org to org
- ✘ **Not a replacement** – of existing efficient processes
- ✘ **Not preclusive** – of other data sharing mechanisms incl. point to point.

# High level design

Seeking to answer some of these questions



## Outputs



High level design document



Implementation Roadmap



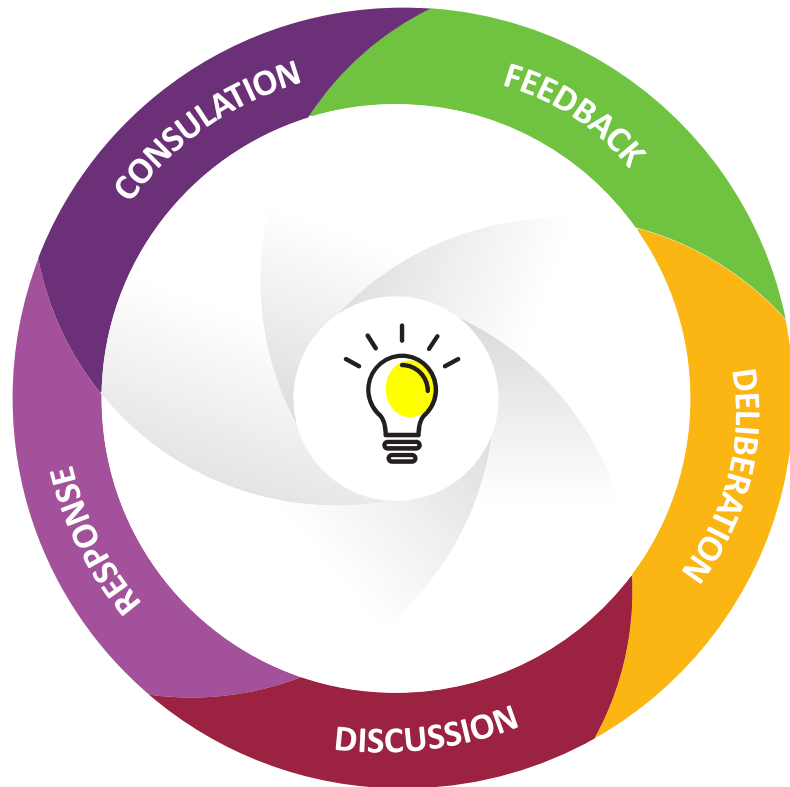
Indicative Implementation Costs



Knowledge sharing

# Co-design process

Working with stakeholders through a range of processes to develop a high-level design



## Expert Working Group

Subject matter experts to provide insights and stress test options and implementation consideration



## Public Workshops

Open forum for broader stakeholders to participate in the co-design process and provide feedback

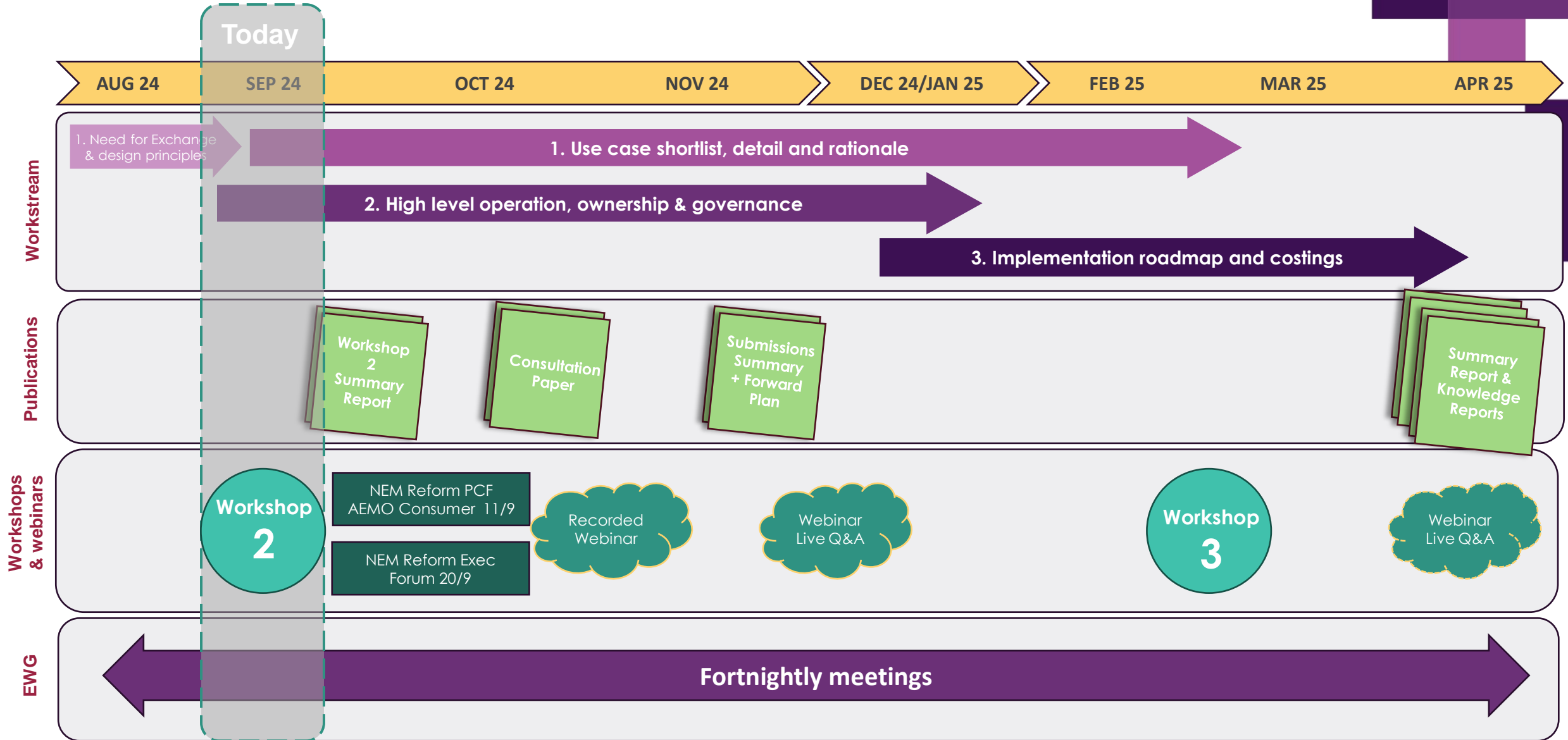


## Consultation Paper

Formal way for all stakeholders to provide feedback



# High level project timeline







# Workshop 1 Recap



# Industry Workshop 1 – a quick recap



Exchange shouldn't be the only way to exchange CER data

We like to know more details about the exchange

Benefits from greater visibility & transparency of CER

How will benefits flow through to end consumers?

Careful management consumer privacy, security, consent

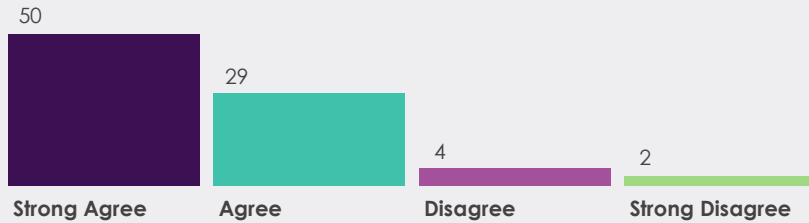
Stage implementation that support the future

Would this lead to more equitable outcomes for consumers?

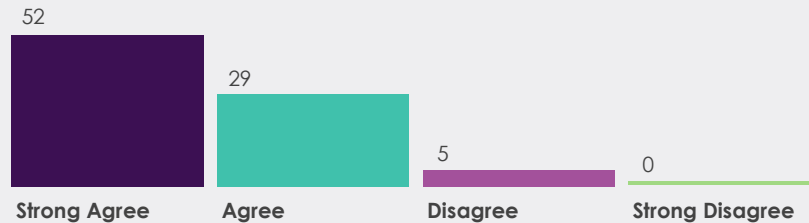
For more information on Workshop 1, please see the *Summary Report and Presentation on AEMO's Project Webpage*

# We asked workshop participants a few questions

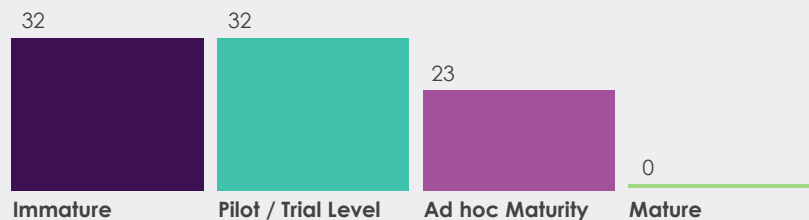
Access to, and efficient sharing of, CER data between many Industry stakeholders is a critical enabler to achieve the NEO and reach Net Zero.



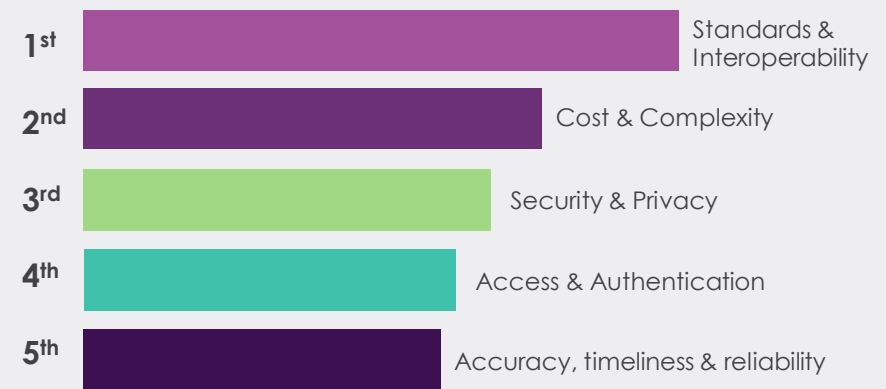
Coordination of CER at scale (with customer consent) is required to enable a more efficient and cost-effective power system for all consumers.



What is your assessment of the current state of CER data sharing maturity in Australia?



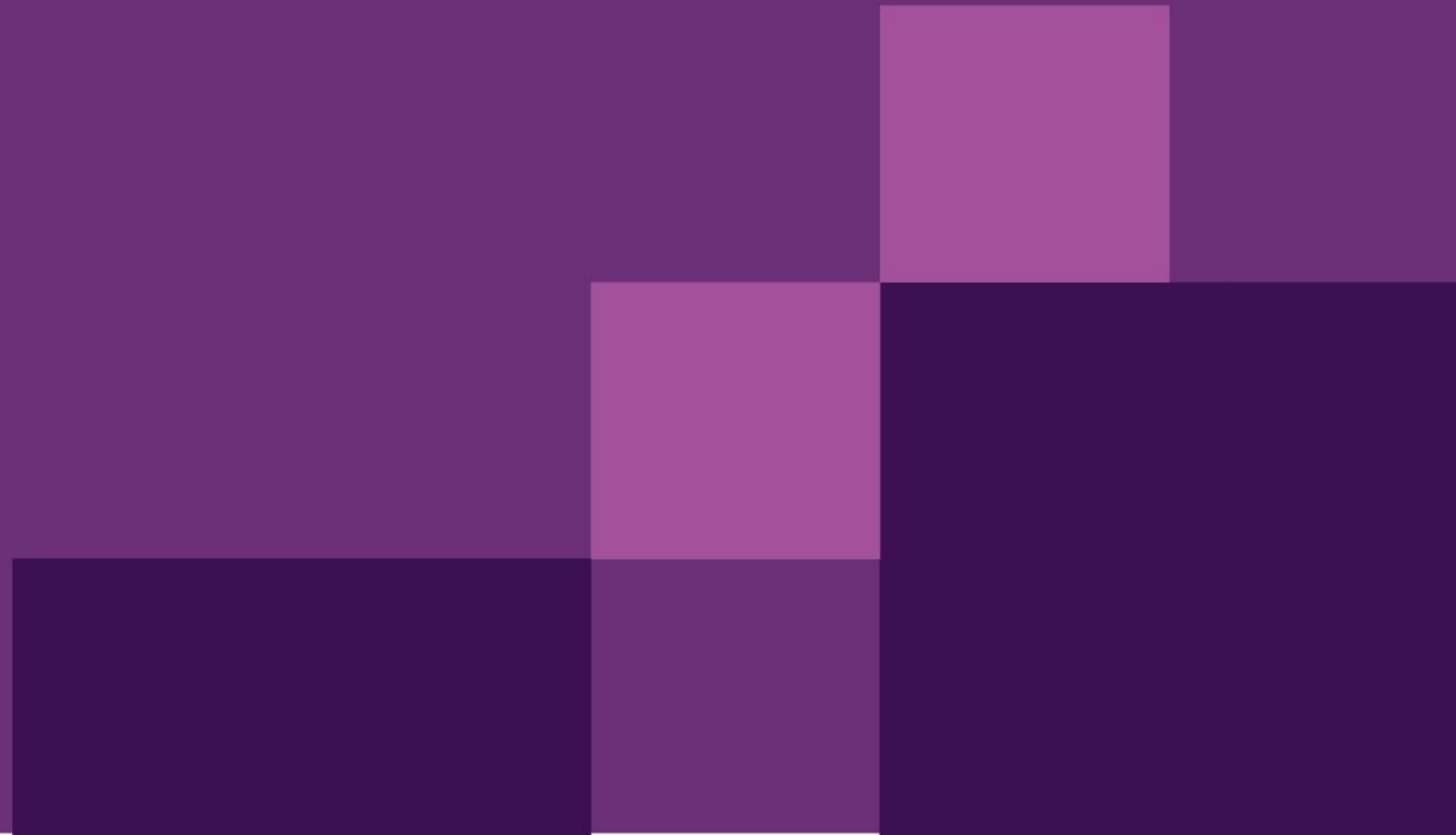
Please rank your CER data sharing challenges or in order of pain point you would like to remove?



Rank which domain of the energy system would get the most value through improved CER data exchange?

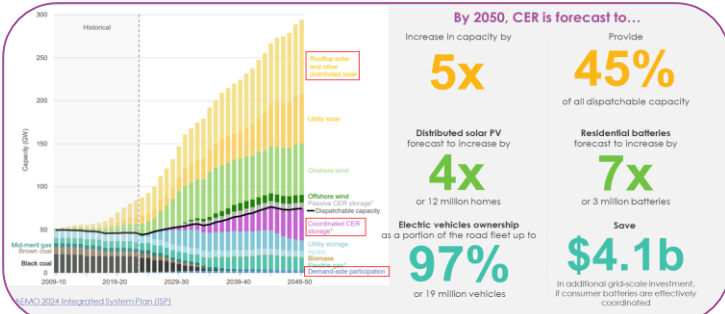


# Why are we undertaking this initiative?



# There is a big program of work planned to unlock benefits from CER

CER is a key part of our system now and in the future: Efficient integration will deliver significant benefits



**\$4.1 billion**  
In savings by 2050

**\$6 billion**  
In additional benefits to consumers, over 20 years

**\$920 million**  
In additional benefits to WEM participants, over 10 years

The CER Roadmap has identified a large program of work to realise the benefits

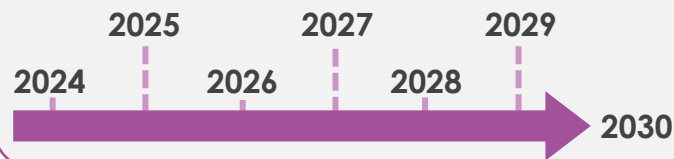
### Four workstreams

- Consumers
- Technology
- Markets
- Power system operations

Lots of projects scheduled & underway

**52x** Projects in the CER Roadmap

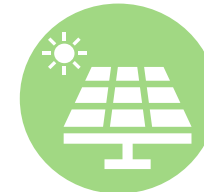
### Multi-year program



Many organisations have been undertaking trials and research



**Network Businesses**

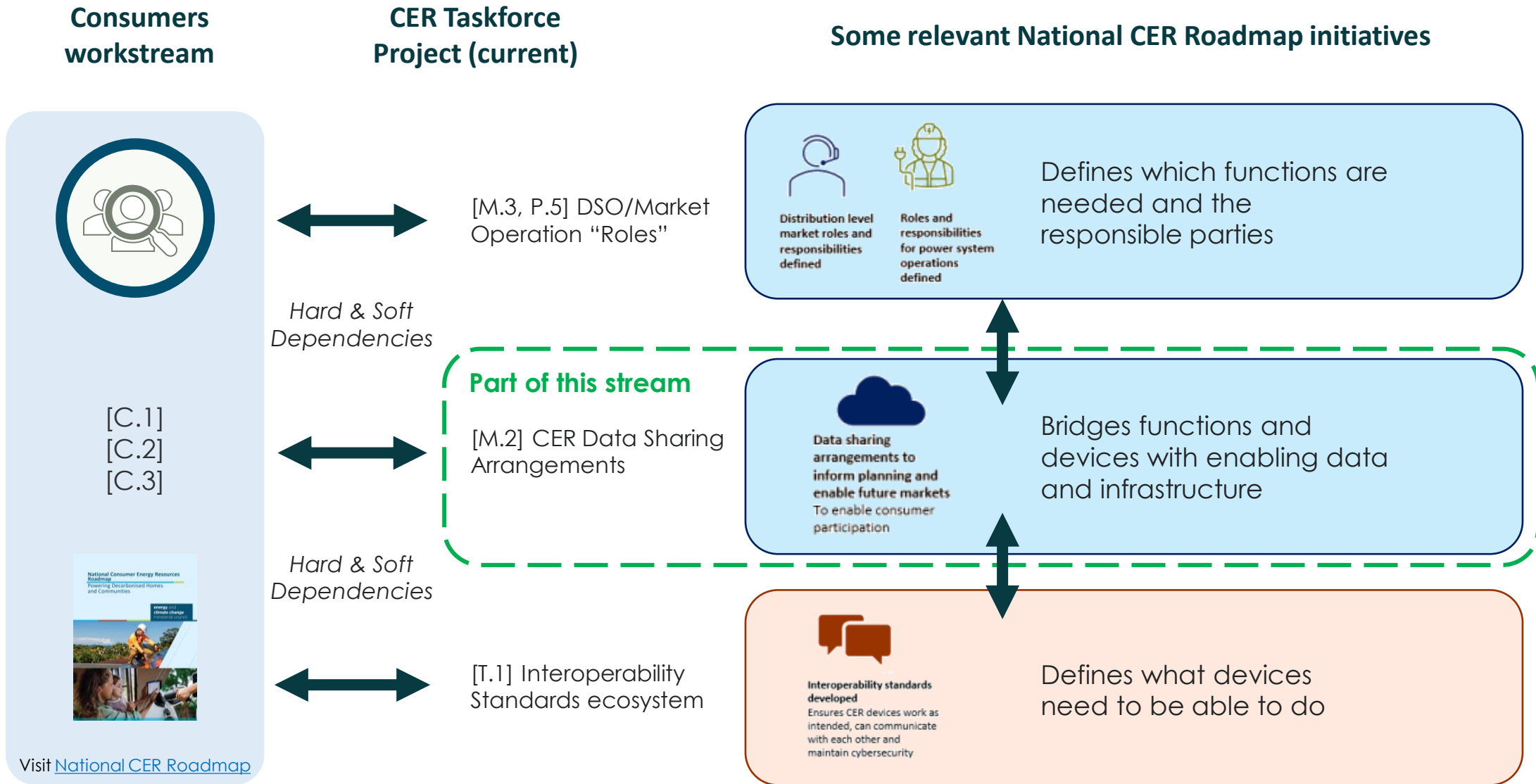


**Retail Businesses**



**Academia**

# How this project fits into the National CER Roadmap



# Australia is not alone in thinking about this

## United States

'Digital Spine' (early investigation stage) - US Dept of Energy, California ISO

## United Kingdom

UK Data Sharing Infrastructure (formerly Digital Spine) (MVP Implementation phase) - enables plug and play options, encouraging whole system interoperability and standardised data sharing.

UK flexibility services standardisation (development phase)

UK EV Charge Point Data Hub (procurement phase)

## Austria

EDA Data Exchange Platform (Est. 2012, owned by 15 DSOs) - create a uniform, decentralised, electronic data exchange for the Austrian electricity and gas sector.

## Portugal

MOBI.E (operational) - industry data hub for EV data

## Australia

- AEMO / AusNet / Mondo, Project EDGE
- Western Power/Synergy/AEMO, Project Symphony
- RACE for 2030: National Charge Link - Public-good EV Data Hub
- Greensync, Decentralised Energy Exchange (deX)

# So why are we doing this?



**This process is about finding the best way to achieve an outcome that we are all aligned on**



# What's in it for customers?



The customer doesn't need to see all the behind-the-scene workings in order for them to have benefits

**It is up to us to make this work for them**

# Co-design Activity 1

Preference Setting Alternative Futures

# Session Overview

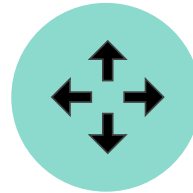
*Addressing data exchange challenges differently*

## Purpose

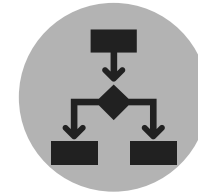
In table groups, we would like you to test alternative futures for CER use cases in order to co-define the value of change.



Explore four potential **challenges in exchanging data**



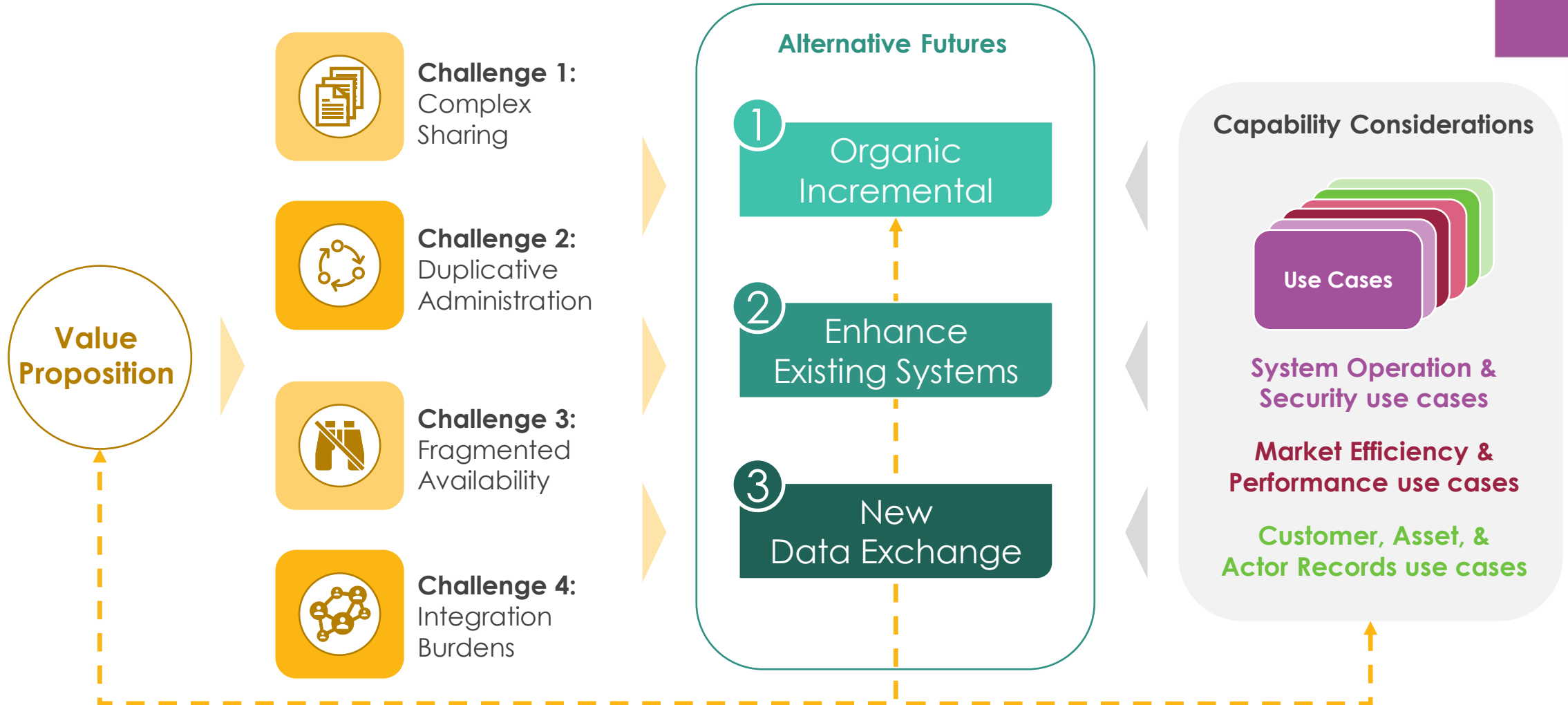
Investigate **three alternative futures** for exchanging CER data in Australia



Focus on the **what, how, when, and why** of using 10 example use cases

# We are preference setting Alternative Futures

*A map to choose your own adventure*



# Four Potential Challenges in Exchanging Data

## Challenge 1



### Complex Sharing

- Bespoke contracts
- Administrative inefficiencies
- Legal and collaboration delays

## Challenge 2



### Duplicative Administration

- Silos of key data
- Repeat many times over to access services
- Slower market response

## Challenge 3



### Fragmented Availability

- Inconsistent access conditions
- Prevents people from doing their job for customers

## Challenge 4



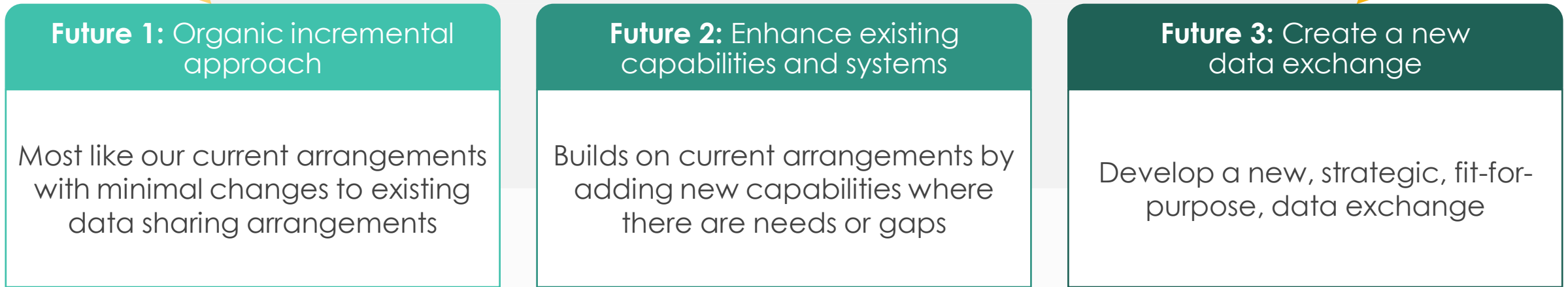
### Integration Burdens

- Cater to many different tech integrations
- Inefficient coupling at scale

# Three Alternative Futures that could address Challenges in Exchanging Data



## Three possible futures that could solve challenges in exchanging data



## Three possible futures that could deliver these use cases



**We aren't starting from a clean slate: these  
Alternative Futures depend on and interact with  
existing capability**

So, what are we working with today?

# Some of the (imperfect) capabilities that exist now



## Proprietary Platforms

- **Data available:** Participating DER install, Participating VPP Portfolio, Participating Services / Instructions, Select Visibility
- Third party ownership with private governance



## Standards (CSIP-AUS and OCPP)

- **CSIP-AUS:** Point to point, does not support 1:Many. Device-level communication protocol based on IEEE 2030.5 using utility servers.
- **OCPP:** Open communication protocol for EV charging equipment and charge management systems



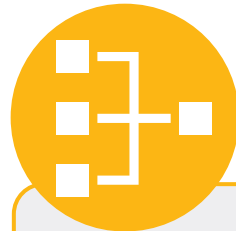
## CDR

- Consent framework allows consumers to share their energy data with accredited 3rd parties.
- **Data available:** NMI standing data (AEMO, Customer Billing data (Retailer), Revenue Meter data (AEMO))



## Portfolio MS and DER Register

- **Data available:** VPP portfolio / DER installation
- Provides a reference of DER installation and VPP portfolio data.
- **Accessibility:** DER register is only accessible by DNSPs and AEMO with limited access provided to installers.



## DERMS

- Operational management system for DER, supports generation of export/import limits, service/device instructions, operational visibility, and near real time status.
- **Significant data source**



## AEMO Systems

- Next slide.



# Some of the (imperfect) capabilities that exist now

## AEMO Systems:



### NEM IDX and IDAM

- NEM reform initiative to upgrade underlying technology that supports streamlined integration between market participants and service providers.
- Replacing legacy technology and bespoke patterns with modern secure standard patterns
- Currently implementing foundational components and will be progressively rolled out to NEM wholesale, retail and B2B data exchanges including the DER Register access



### NEM Retail

- Facilitates energy retail competition and settlement in the NEM
- Provides 'source of truth' on actors performing defined NER roles at a given site
- Supports the sharing of NMI standing data between parties and supports customer switching noting that consumer interactions incl. consent are managed by the incoming retailer.



### B2B eHub

- Purpose: exchange information between the multiple parties responsible for energy supply to consumers.
- Supports limited form of 1:Many
- Legacy technology, scheduled to be upgrade to use the same capabilities as the IDX/IDAM initiatives.
- Provides lessons learned on enabling data exchange and governance approaches.

# Three Alternative futures that could deliver 10 example Use Cases



Three possible futures that could solve challenges in exchanging data



Three possible futures that could deliver these use cases

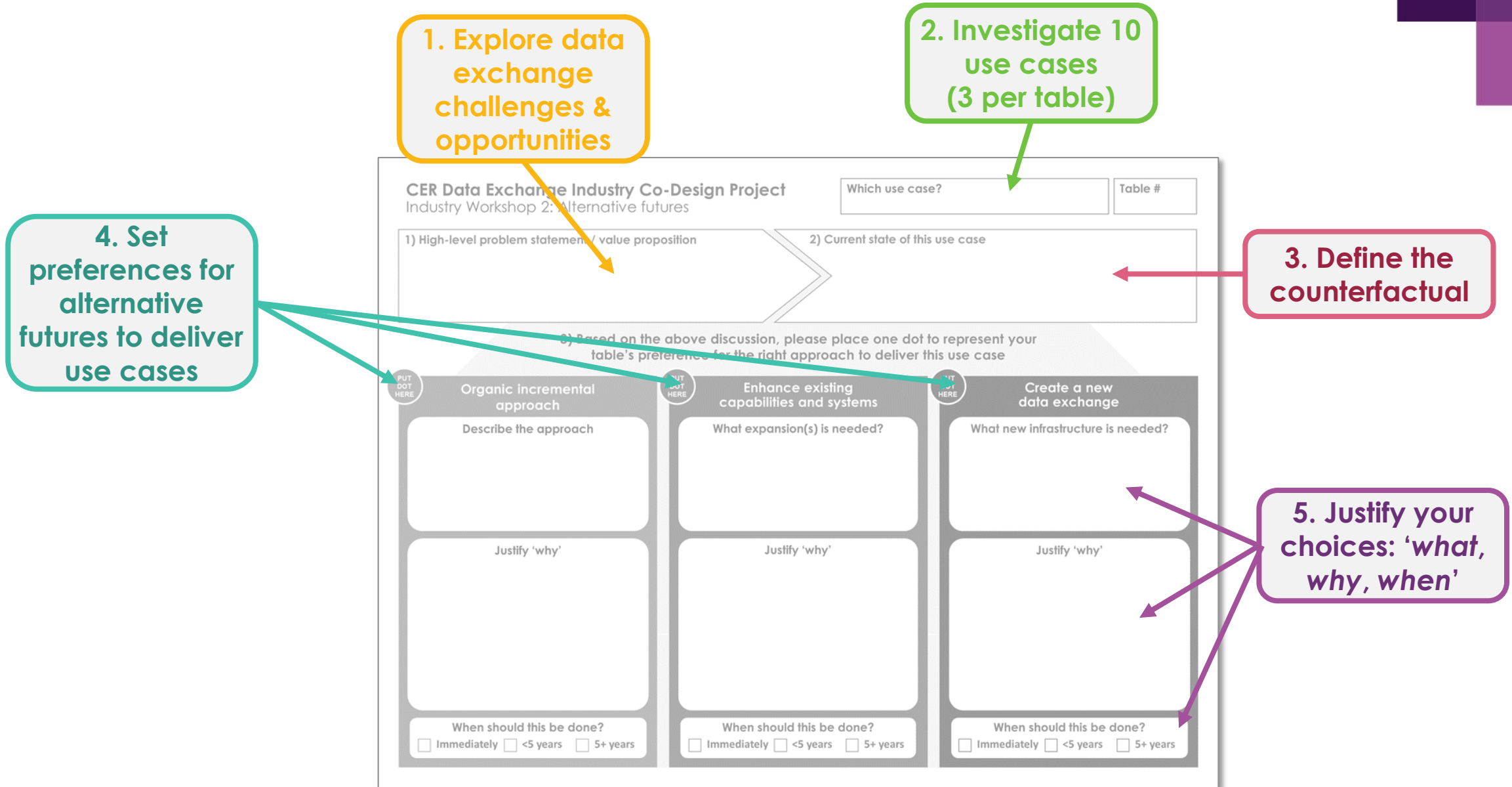


# Co-design activity 1

## Round 1

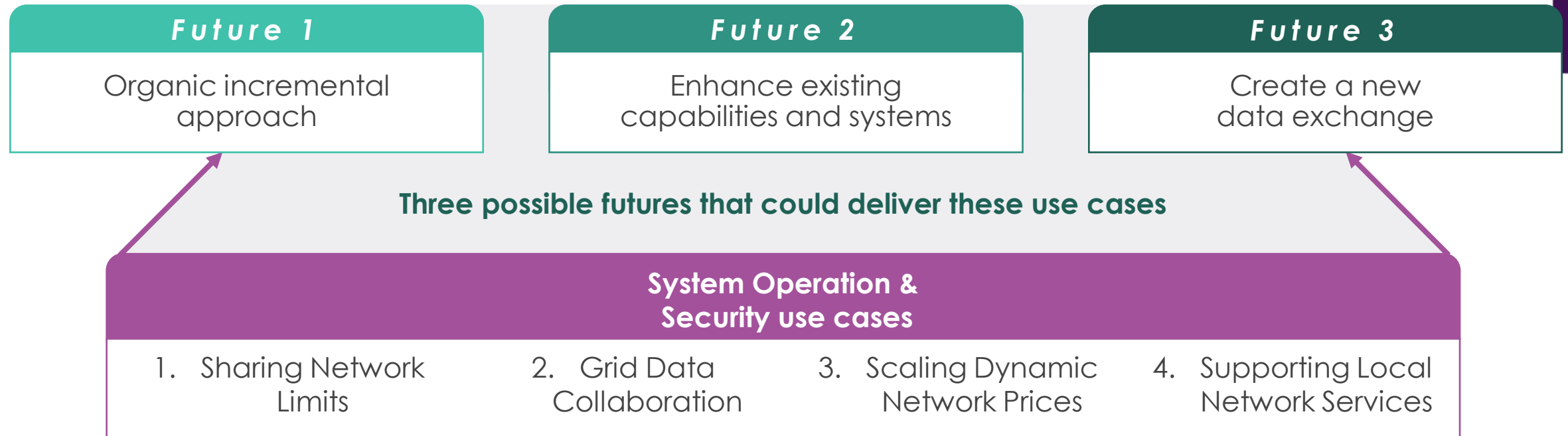
Testing alternative futures for System Operation  
& Security use cases

# What are we going to do in this activity?



# Testing alternative futures Round 1

System Operation & Security use cases





# Morning tea break

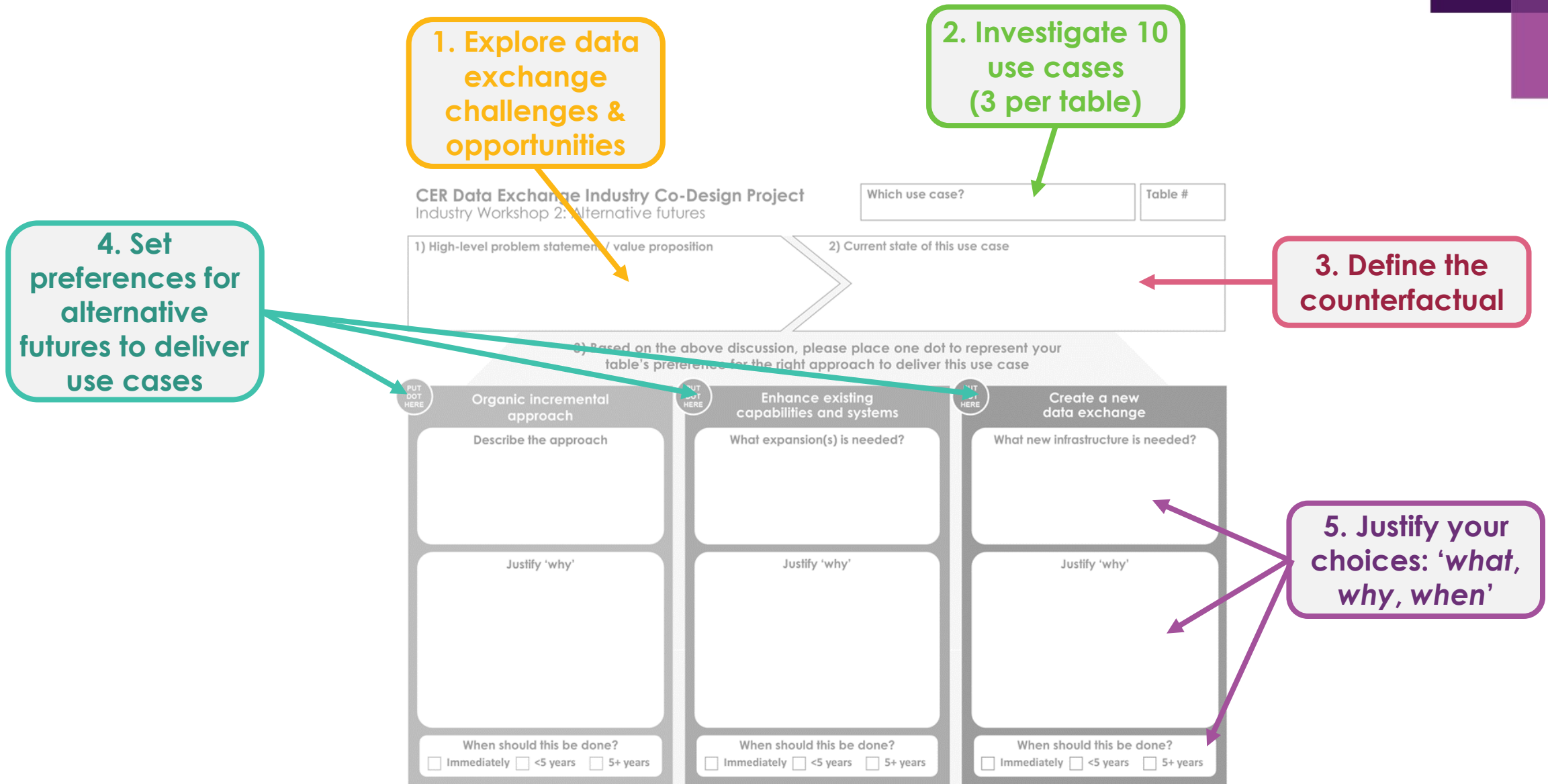


# Co-design activity 1

## Round 2

Testing alternative futures for Market Efficiency & Performance use cases

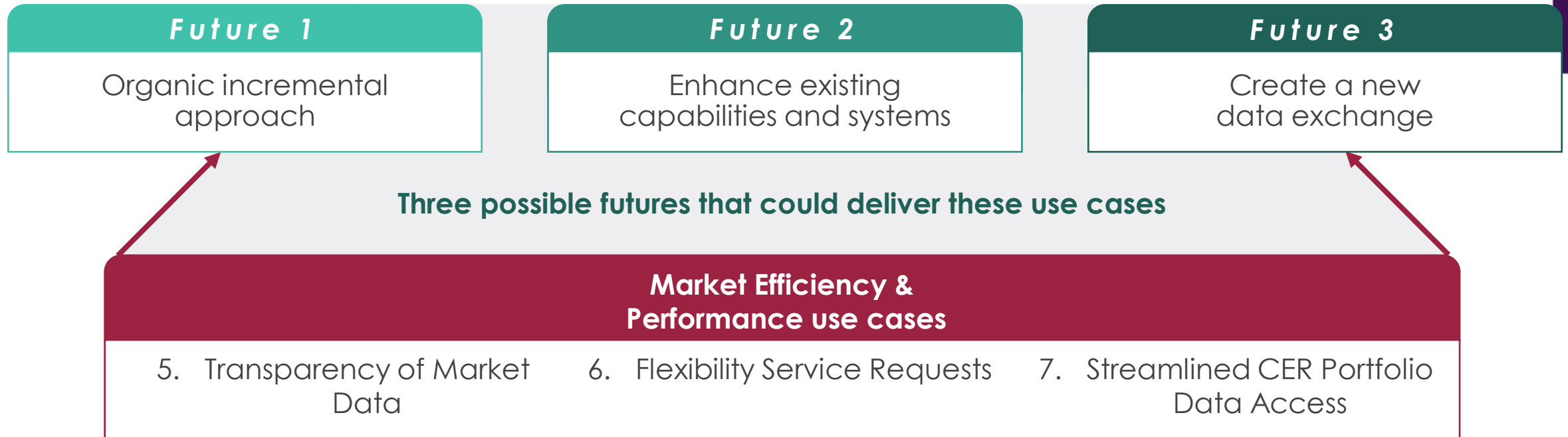
# Reminder: what are we doing in this activity?





# Testing alternative futures Round 2

Market Efficiency & Performance use cases



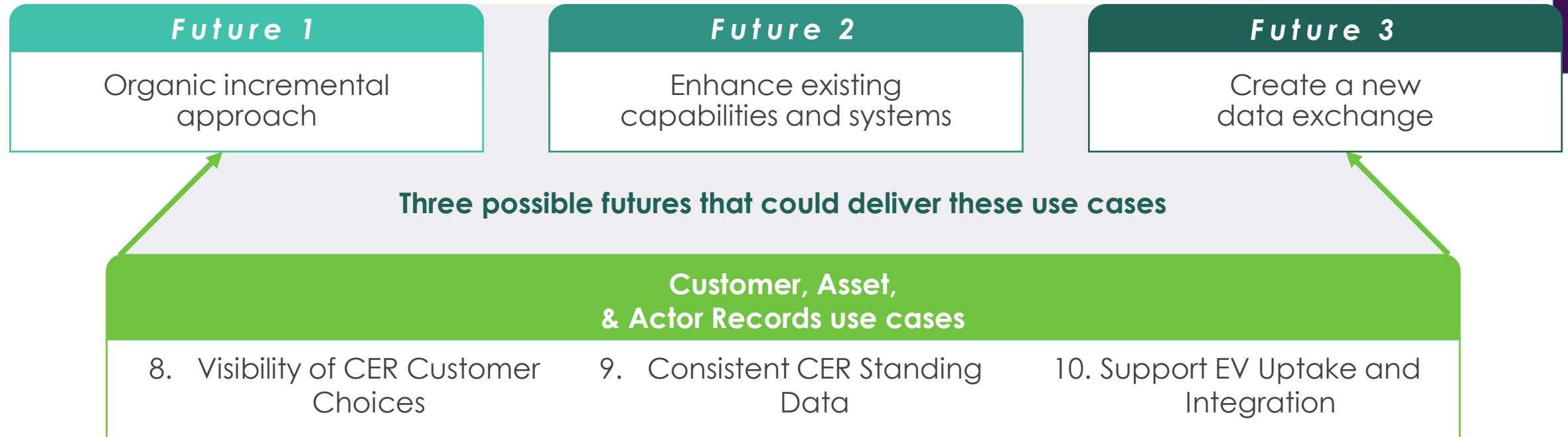
# Co-design activity 1

## Round 3

Testing alternative futures for Customer, Asset, & Actor  
Records use cases

# Testing alternative futures Round 3

*Customer, Asset, & Actor Records use cases*

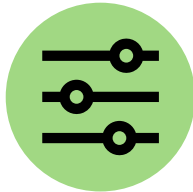


# Preview – what's after lunch

# Activity Overview: Trade-offs of different forms of a CER data exchange

## Purpose

In table groups, we would like you to describe your priorities for key trade-offs and evaluate representative options of exchange design (keeping in mind the challenges and problem statements explored in activity 1).



Identify and explain where you sit on **three key design trade-off spectrums**



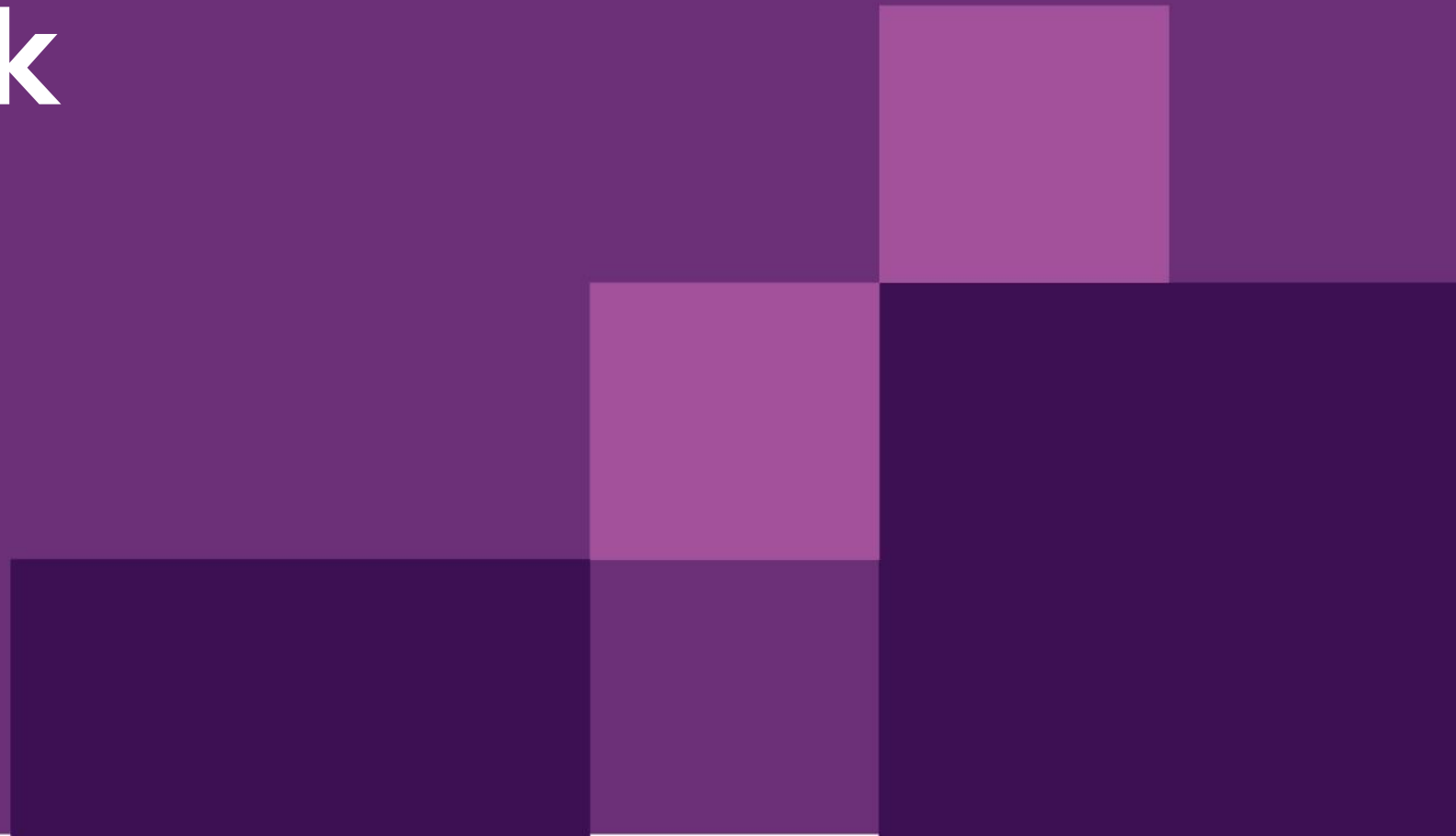
Assess the pros and cons of **three representative options** for a CER Data Exchange Ownership, Oversight and Functionality



Evaluate how the options meet common and table-led **criteria for a fit-for-purpose exchange**



**Lunch break**



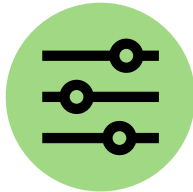
# 5. Co-design Activity 2

High level design trade-offs and options

# Activity Overview: Trade-offs of different forms of a CER data exchange

## Purpose

In table groups, we would like you to describe your priorities for key trade-offs and evaluate representative options of exchange design (keeping in mind the challenges and problem statements explored in activity 1).



Identify and explain where you sit on **three key design trade-off spectrums**



Assess the pros and cons of **three representative options** for a CER Data Exchange Ownership, Oversight and Functionality



Evaluate how the options meet common and table-led **criteria for a fit-for-purpose exchange**



# CER Data Exchange

Non-Exchange  
Data Transfers



## Oversight



### Regulatory consumer value protection

Forward investment plans, roles & responsibilities, change management, costs and recovery, policy interactions, CER data compliance, oversee owner

## Owner/Operator



### Manage the exchange

Implement, upgrade, maintain, integrate systems, onboard users, change management

## Functionality



### Enable use-cases services

E.g. Store data, control quality, response loops, consent tracking, data compliance, authentication

# Spectrum of options and trade-offs

## FUNCTIONALITY

What should the exchange do as it transfers CER data?



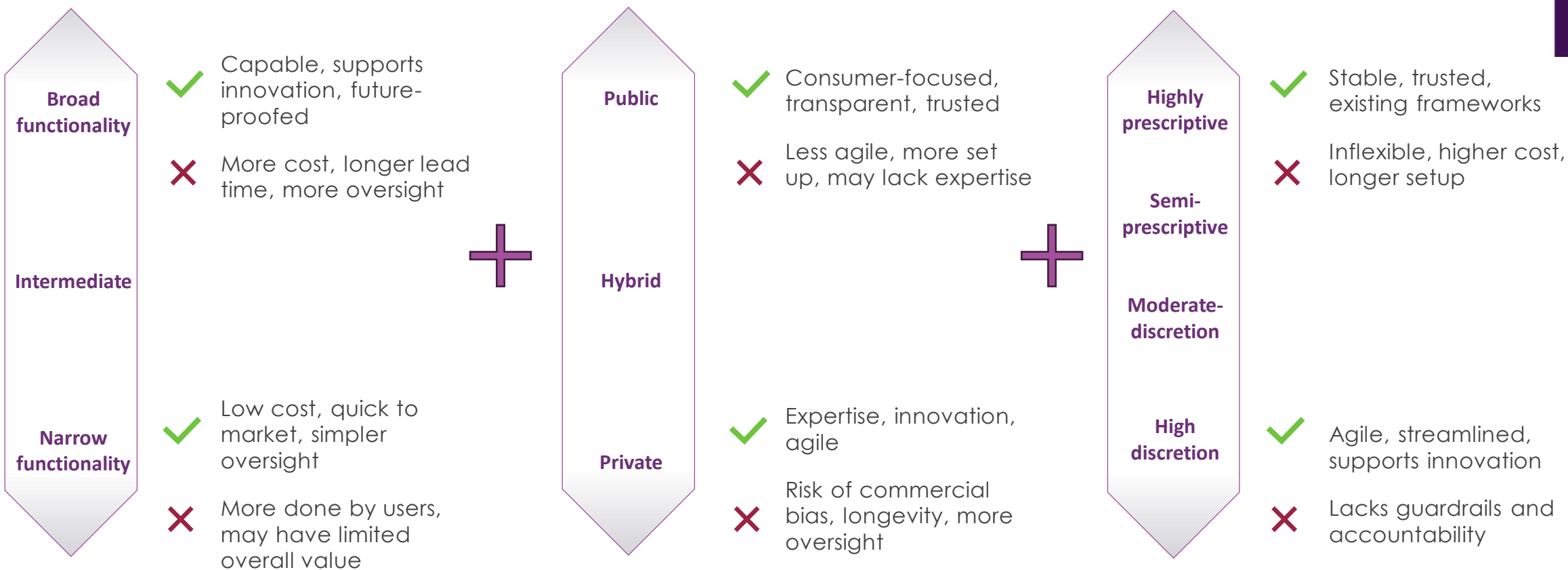
## OWNERSHIP

Who should own, operate and implement the Exchange?



## OVERSIGHT

What should exchange and industry oversight look like?



# Activity 2A





# Activity #2a Placemat Overview

## Activity components:

1. Discuss and describe the most important design trade-offs for each spectrum.
2. Determine and justify where you would want a CER data exchange to fall on the spectrum, considering the challenges, futures and use cases discussed in Activity 1.
3. Identify your priorities for what trade-offs should carry most weight for your preferred style of CER Data Exchange.

For further reading, see slides 51, 54 & 60

Table #

Functionality	Ownership	Oversight
		
<b>What should the exchange do as it transfers CER data?</b>	<b>Who should own, operate and implement the Exchange?</b>	<b>What should exchange and industry oversight look like?</b>
<div style="display: flex; flex-direction: column; align-items: center;"> <div style="margin-bottom: 10px;">Broad functionality</div> <div style="margin-bottom: 10px;">Intermediate</div> <div style="margin-bottom: 10px;">Narrow functionality</div> </div>	<div style="display: flex; flex-direction: column; align-items: center;"> <div style="margin-bottom: 10px;">Public</div> <div style="margin-bottom: 10px;">Hybrid</div> <div style="margin-bottom: 10px;">Private</div> </div>	<div style="display: flex; flex-direction: column; align-items: center;"> <div style="margin-bottom: 10px;">Highly prescriptive</div> <div style="margin-bottom: 10px;">Balanced</div> <div style="margin-bottom: 10px;">High discretion</div> </div>
<p><b>1. What are the trade-offs?</b></p> <ul style="list-style-type: none"> <li>• Capable yet complex</li> <li>•</li> <li>•</li> <li>•</li> </ul> <p><b>2. Place your dot: Why?</b></p> <p style="height: 100px;"></p> <p><b>3. Your trade-off priorities?</b></p> <ul style="list-style-type: none"> <li>•</li> <li>•</li> <li>•</li> </ul>	<p><b>1. What are the trade-offs?</b></p> <ul style="list-style-type: none"> <li>• Consumer-focus yet less agile</li> <li>•</li> <li>•</li> <li>•</li> </ul> <p><b>2. Place your dot: Why?</b></p> <p style="height: 100px;"></p> <p><b>3. Your trade-off priorities?</b></p> <ul style="list-style-type: none"> <li>•</li> <li>•</li> <li>•</li> </ul>	<p><b>1. What are the trade-offs?</b></p> <ul style="list-style-type: none"> <li>• Stable/trusted yet inflexible</li> <li>•</li> <li>•</li> <li>•</li> </ul> <p><b>2. Place your dot: Why?</b></p> <p style="height: 100px;"></p> <p><b>3. Your trade-off priorities?</b></p> <ul style="list-style-type: none"> <li>•</li> <li>•</li> <li>•</li> </ul>

# Table Sheet: Elements of Data Exchange

We are codesigning preferences, noting the Exchange is not the only way to transfer data

## Governance Layer

- Ownership & Funding
- Oversight & Compliance
- Roles & Responsibilities
- Auditability

## Data Infrastructure Layer

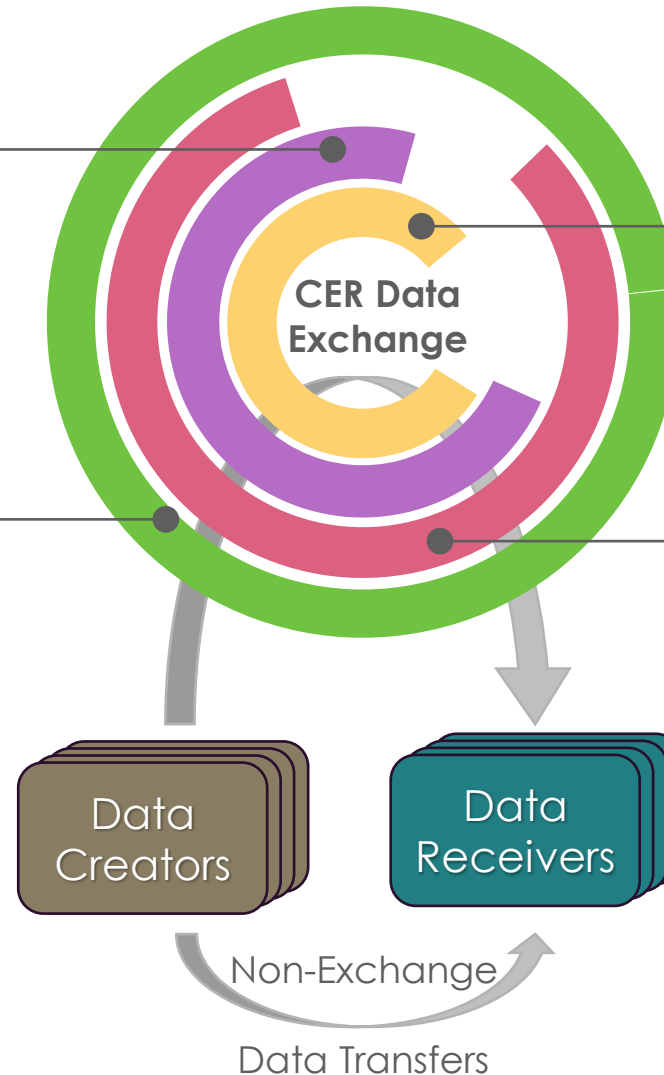
- Servers
- Protocols
- Latency
- Redundancy

## Security Layer

- Authentication
- Privacy
- Security
- Encryption



## Data Management Layer





- Quality Control
- Life cycle management
- Interoperability
- Version control



# Table Sheet – First Pass Trade-Off Evaluation

## Proposed Evaluation Criteria

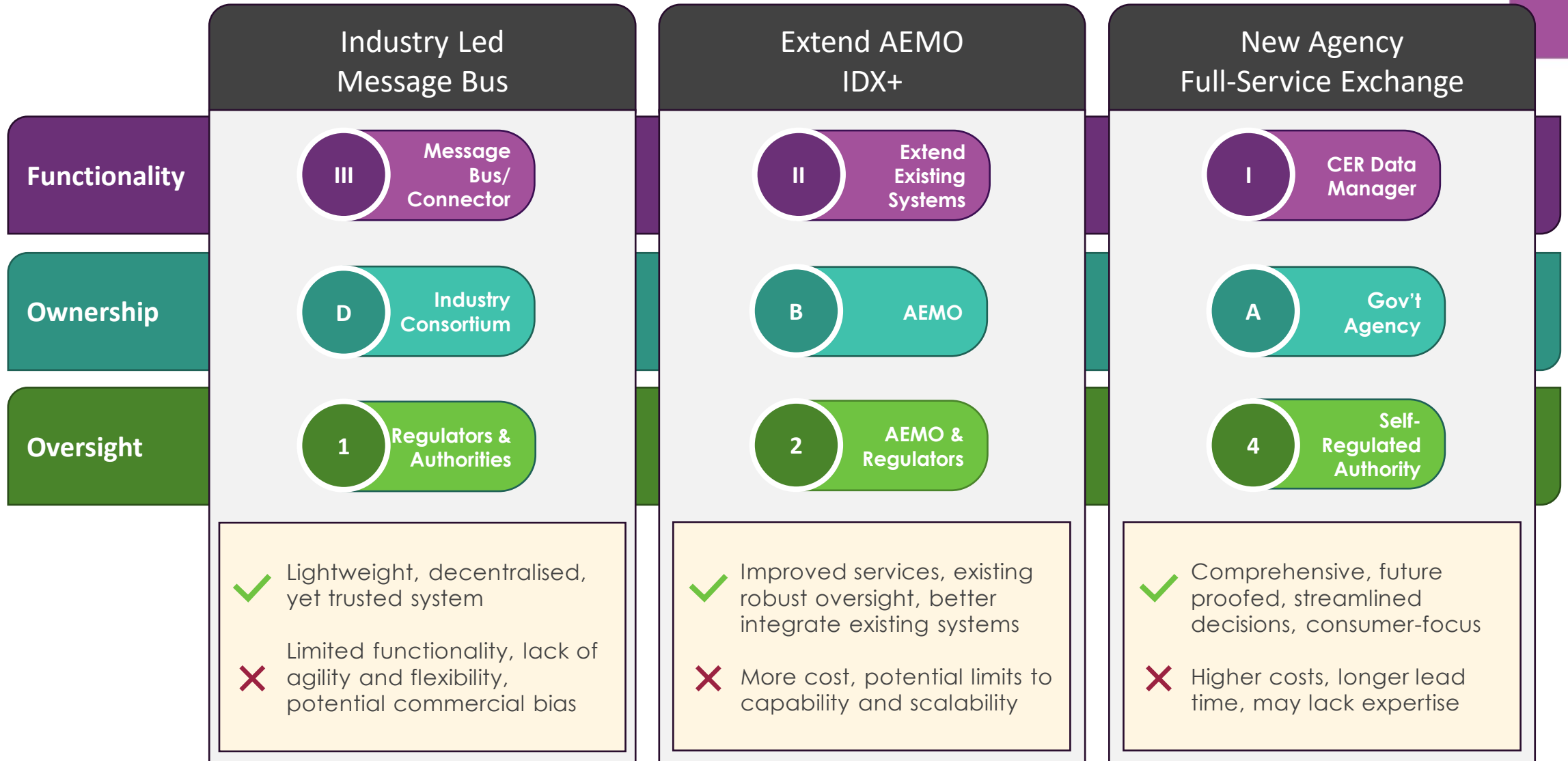
Functionality	Capability	Cost	Speed to market	Flexibility	Accessibility	Fit-for-purpose*
I. CER Data Manager						
II. Extend Existing Systems						
III. Message Bus/Connector						
Ownership	Transparent	Trusted	Efficient & Effective	Enduring	Consumer-centric	Secure
A. Government Agency						
B. AEMO						
C. AEMO + Licence						
C. Industry Consortium						
Oversight	Capability	Flexibility	Cost	Engagement	Consumer Centric	Trust
1. Regulators & Authorities						
2. AEMO & Regulators						
3. New Authority Regulates						
4. Self-Regulated Authority						

-  Achieves
-  Concerns
-  Limited
-  Unknown

# Activity 2B



# Overview of Potential Exchange Options





# Evaluation criteria for a CER Data Exchange



## **Fit-for purpose**

Suitable to solve the challenges and use-cases identified in Activity 1. Includes appropriate speed to market, and ease of implementation, integration and uptake.



## **Efficient**

Economical upfront and ongoing cost for services provided and efficient processes for stakeholder engagement and data exchange development.



## **Flexible**

Able to evolve and scale for more data, different use cases, changes in regulator or market environments and different user requirements as needed over time.



## **Trust**

Can be trusted by industry, customers and consumers to protect their data and rights and deliver an effective and efficient exchange in the long-term interests of consumers.

# Activity #2b Placemat Overview



Table #

## Activity components:

1. Identify what you like and what you dislike about each representative option for a CER data exchange design.
2. Describe improvements to the option e.g. by modifying its components or including measures that could mitigate your dislikes and boost your likes.
3. Evaluate each option against the provided criteria and any added by you. **achieves**, **concerns**, or **limited**.

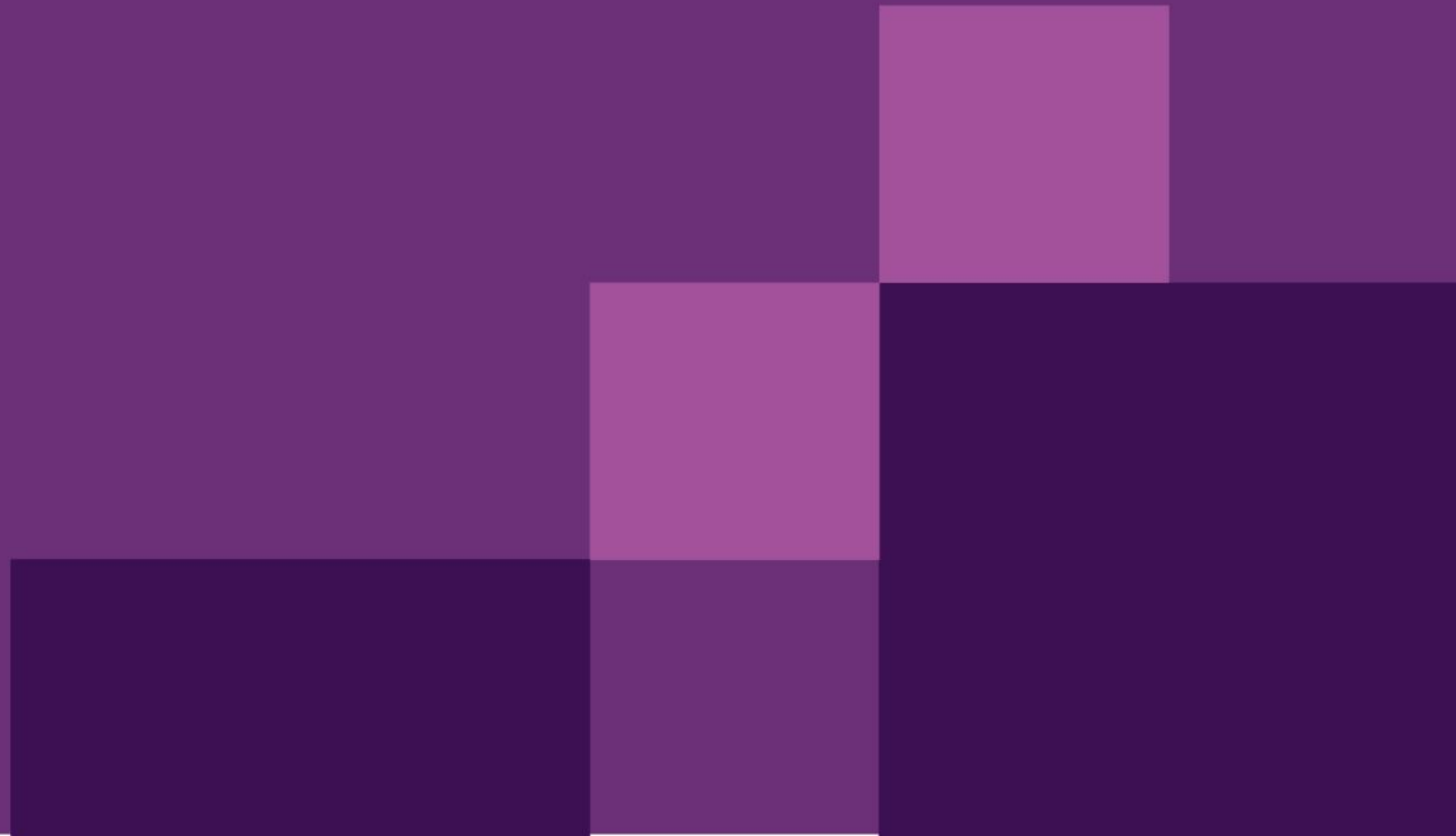
## CER Data Exchange Industry Co-Design Project Industry Workshop 2: Ownership, Oversight & Functionality

Industry Led Message Bus	AEMO IDX Extension	New Agency Full Service Exchange																																				
<table border="1"><tr><td>Like</td><td>Dislike</td></tr><tr><td colspan="2">How would you improve this option?</td></tr><tr><td>Fit for Purpose</td><td>Efficient</td><td>Flexible</td><td>Trust</td></tr><tr><td colspan="4">Additional Criteria?</td></tr></table>	Like	Dislike	How would you improve this option?		Fit for Purpose	Efficient	Flexible	Trust	Additional Criteria?				<table border="1"><tr><td>Like</td><td>Dislike</td></tr><tr><td colspan="2">How would you improve this option?</td></tr><tr><td>Fit for Purpose</td><td>Efficient</td><td>Flexible</td><td>Trust</td></tr><tr><td colspan="4">Additional Criteria?</td></tr></table>	Like	Dislike	How would you improve this option?		Fit for Purpose	Efficient	Flexible	Trust	Additional Criteria?				<table border="1"><tr><td>Like</td><td>Dislike</td></tr><tr><td colspan="2">How would you improve this option?</td></tr><tr><td>Fit for Purpose</td><td>Efficient</td><td>Flexible</td><td>Trust</td></tr><tr><td colspan="4">Additional Criteria?</td></tr></table>	Like	Dislike	How would you improve this option?		Fit for Purpose	Efficient	Flexible	Trust	Additional Criteria?			
Like	Dislike																																					
How would you improve this option?																																						
Fit for Purpose	Efficient	Flexible	Trust																																			
Additional Criteria?																																						
Like	Dislike																																					
How would you improve this option?																																						
Fit for Purpose	Efficient	Flexible	Trust																																			
Additional Criteria?																																						
Like	Dislike																																					
How would you improve this option?																																						
Fit for Purpose	Efficient	Flexible	Trust																																			
Additional Criteria?																																						

# Afternoon tea break



# Outcomes from today



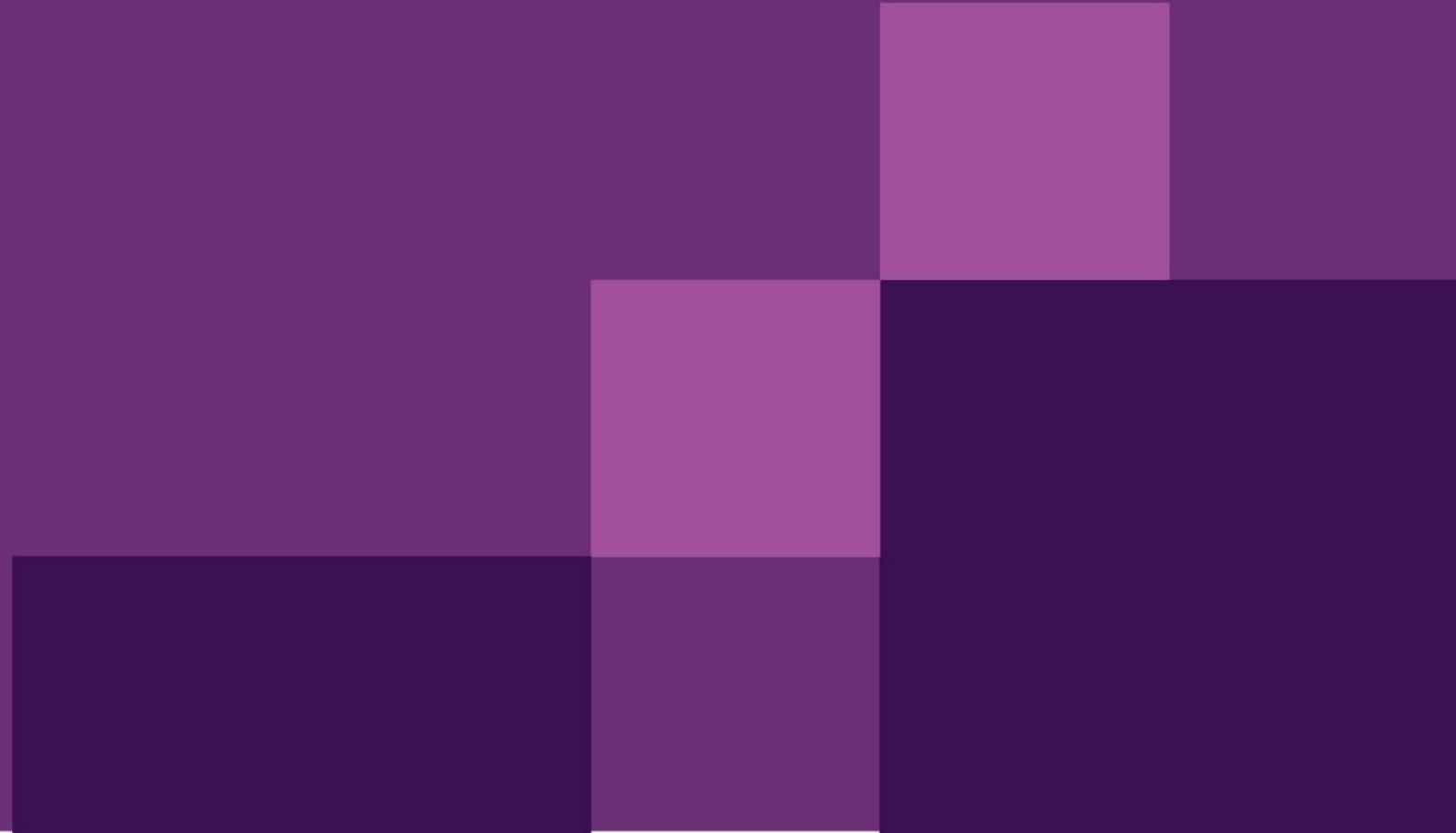
# Survey



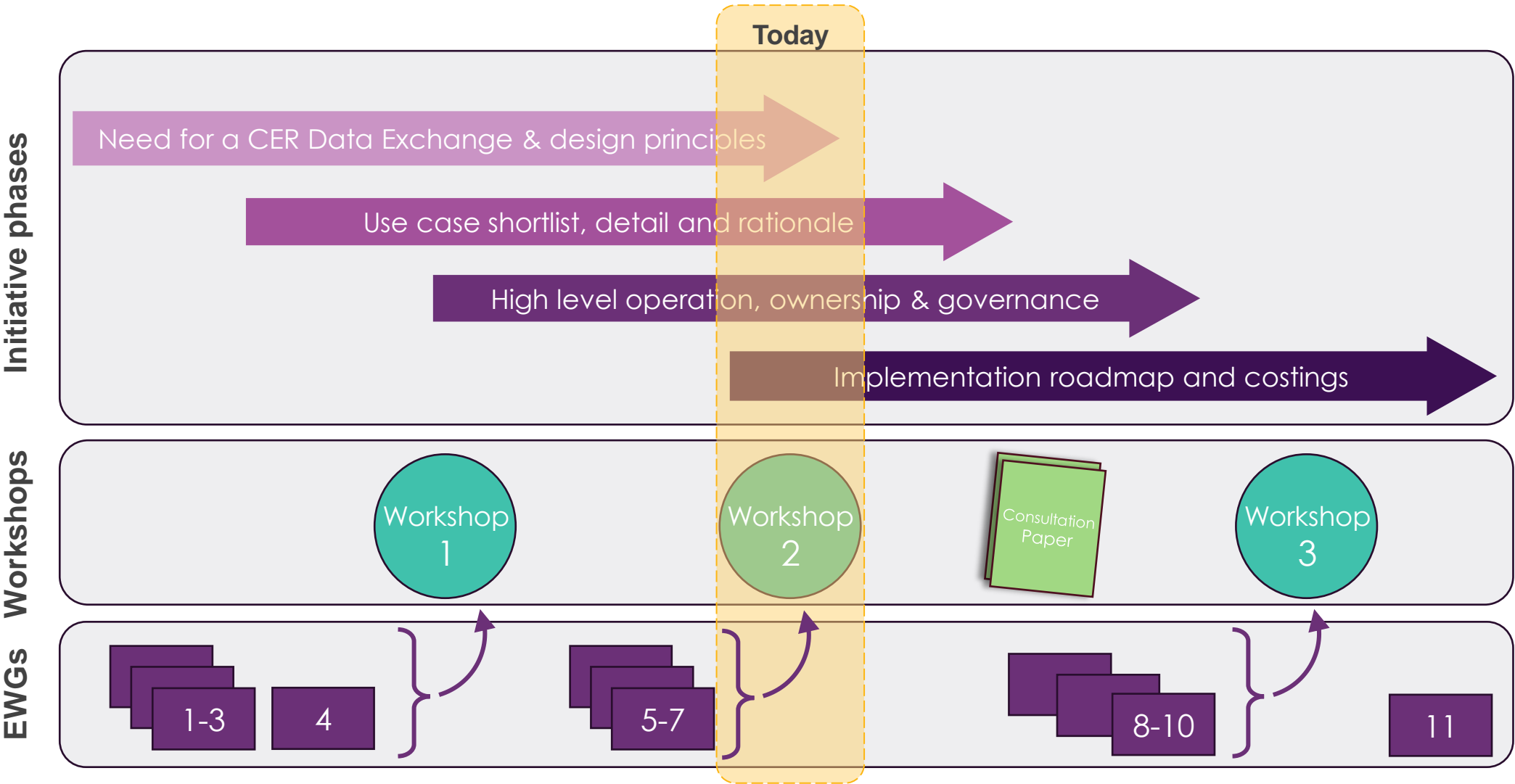
Join at [menti.com](https://menti.com) |  
use code **6417 8391**



# Wrap up and next steps



# Where is the co-design process at?



This would be the third time we show this – checking intentional

Also it's a slightly slimmed down version of the others

**Outcome**  
High-level design of industry preference



Contact us

[cerdataexchange@aemo.com.au](mailto:cerdataexchange@aemo.com.au)