

The following statistics pertain to the jurisdictions of New South Wales, Queensland, South Australia and Victoria for the reporting period ending November 2019.

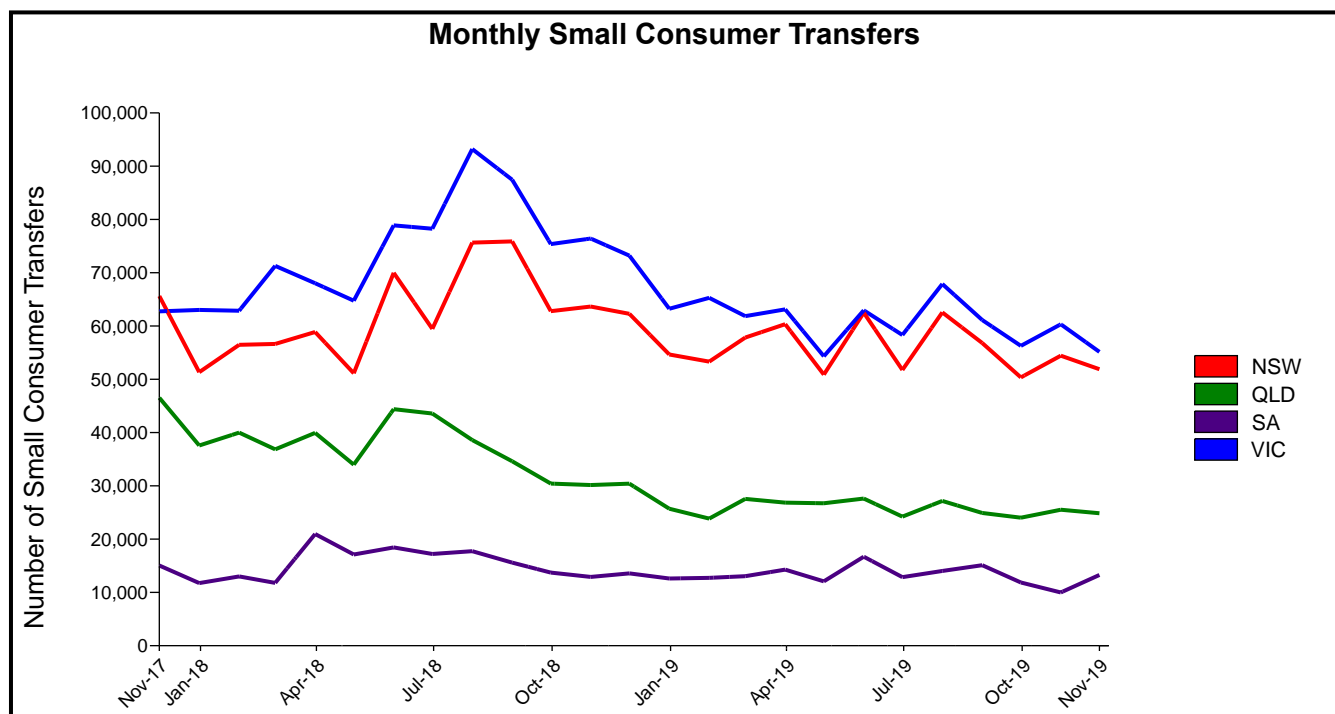
The report contains statistics providing trends of consumer transfers in the National Electricity Market (NEM). Detailed public NEM retail transfer statistics and the document describing the retail statistics are available at [http://www.aemo.com.au/data/retail\\_transfers.html](http://www.aemo.com.au/data/retail_transfers.html).

The transfer statistics in the table are based on the number of consumer transfers that are registered in AEMO's market system - Market Settlements and Transfer Solution (MSATS).

	NSW	QLD	SA	VIC
<b>1 month annualised transfer rate<sup>1</sup></b>	<b>17%</b>	<b>13%</b>	<b>18%</b>	<b>22%</b>
<b>Total consumers transferred in the NEM to date</b>	<b>7,979,292</b> (was 7,927,164)	<b>3,652,589</b> (was 3,627,548)	<b>2,427,909</b> (was 2,414,600)	<b>10,964,463</b> (was 10,909,162)
<b>Number of small consumer transfers in progress at month end</b>	<b>22,748</b> (was 22,745)	<b>10,553</b> (was 10,395)	<b>6,348</b> (was 7,325)	<b>8,392</b> (was 9,329)
<b>Small consumer transfers completed this month</b>	<b>51,886</b>	<b>24,853</b>	<b>13,272</b>	<b>55,139</b>

### 1. Monthly Small Consumer Transfers

The graph represents the volume of consumer transfers<sup>2</sup> for each month in the respective jurisdictions over a 2 year rolling window.

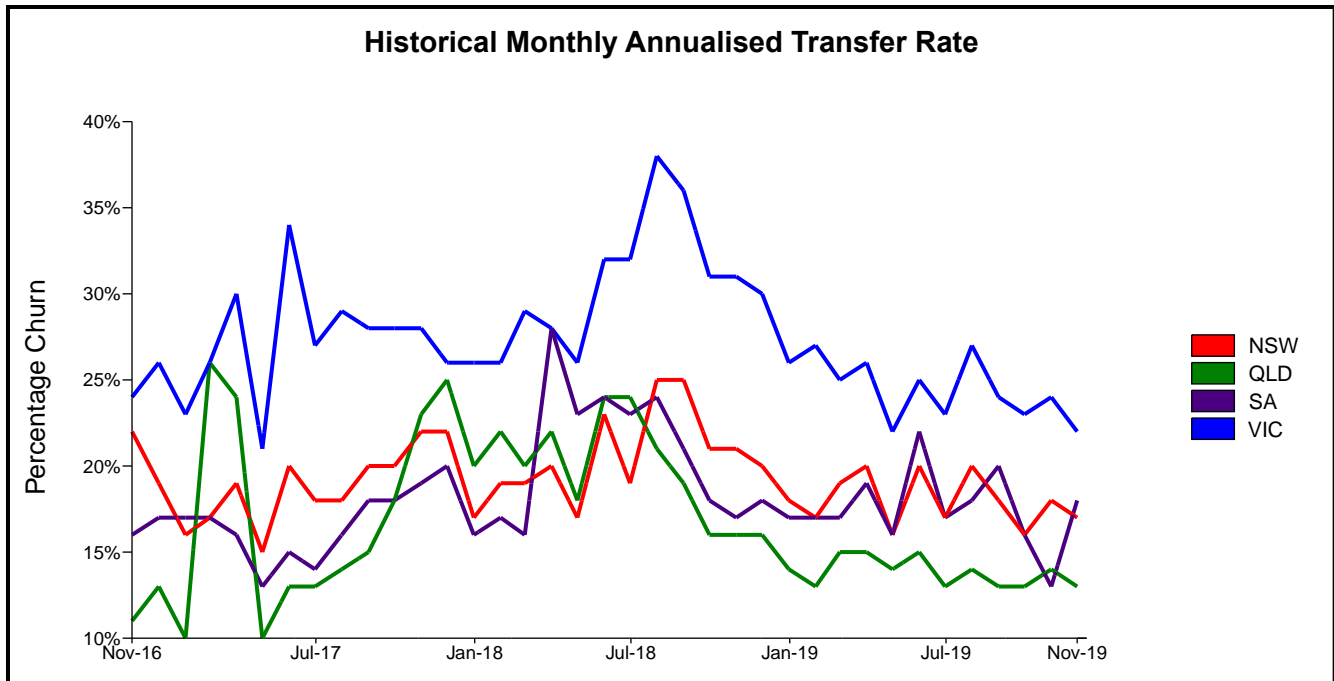


<sup>1</sup> The 1 month annualised transfer rates stated in the table above, are calculated by projecting the previous months transfer volumes over the full year, and calculating the percentage churn that would occur if the transfer rate was maintained over the year, rounded to the nearest percentage.

<sup>2</sup> These retail transfer statistics are based on a retailer's Company ID (A.C.N) and not the retailer's Participant IDs as recorded in MSATS.

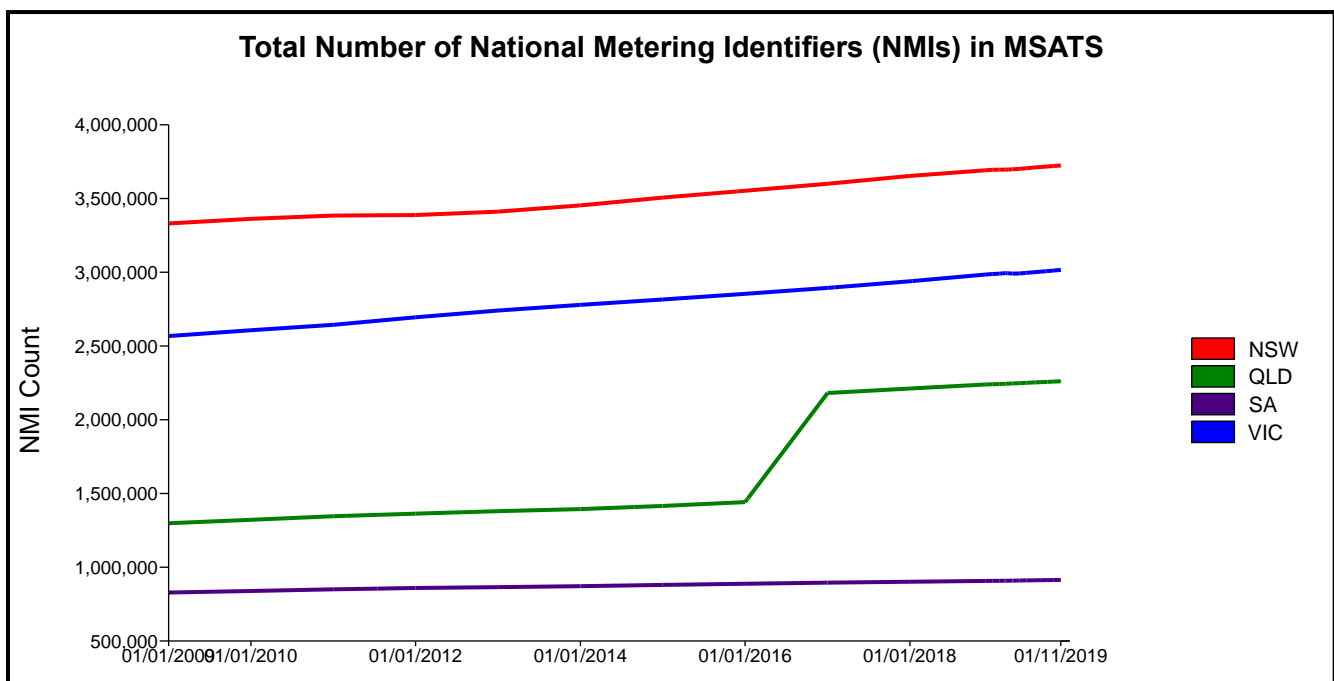
### 2. Historical Monthly Annualised Transfer Rate

The graph represents the historical one month annualised transfer rate over a 3 year rolling window in the jurisdictions of New South Wales, Queensland, South Australia and Victoria.



### 3. Total Number of National Metering Identifiers (NMIs)

The graph represents the total number of National Metering Identifiers (NMIs) in MSATS in the respective jurisdictions since the commencement of MSATS in January 2002. The graph includes NMIs with a status of Active, Greenfield and De-energised.



Please email [supporthub@aemo.com.au](mailto:supporthub@aemo.com.au) regarding queries on this report.